

Ottii®



2024

Beyond Upholstery

Century Collection

Beyond Upholstery

Harnessing the very essence of refined leisure, Ottiu reimagines the mid-century lifestyle, infusing it with an unparalleled sense of grandeur and opulence. With an unwavering dedication to outstanding craftsmanship, each upholstery piece emerges as a testament to the extraordinary allure of the Hollywood Golden Era, inviting you to embark on a timeless journey of glamour and charm.

Embracing the ethos of meticulous artistry, Ottiu's Portuguese master artisans, guided by an unwavering commitment to their craft, orchestrate an exquisite symphony of creation. Every piece is lovingly crafted akin to an irreplaceable masterpiece.



www.ottiu.com | info@ottiu.com





Experience the epitome of luxury and craftsmanship in every detail.



Handmade in Portugal



High-quality Materials Selection



Heritage Craft Preservation



We support Local Producers

Guide

ALL PRODUCTS

Dining Chairs / Bar Chairs / Armchairs / Sofas /
Stools / Beds

ON-TREND

The Iconic Family / Metallic Chairs / Subtle Pop Up of Color /
Timeless Design & Eternal Charm / Never Go Out of Style /
Dream a Little Dream of Ottiu

PROJECTS

Hospitality / Residential

DINING CHAIRS



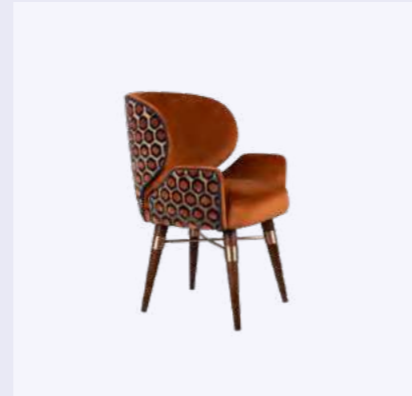
Tippi Dining Chair

+



Louis Dining Chair

+



Louis I Dining Chair

+



Caron Dining Chair

+



Lupino Dining Chair

+



Karin Dining Chair

+



Ingrid Dining Chair

+



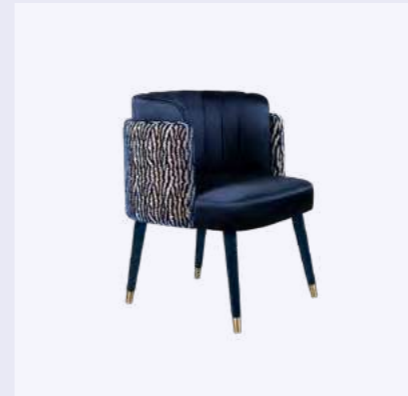
Helen Dining Chair

+



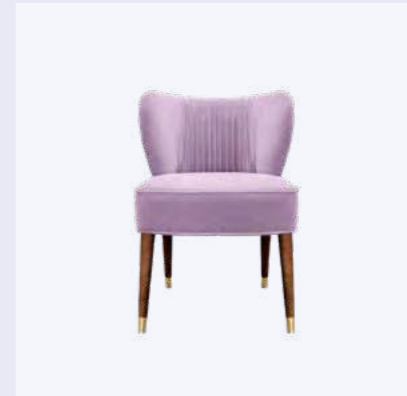
Kelly Dining Chair

+



Anita Dining Chair

+



Visconti Dining Chair

+



Charisse Dining Chair

+



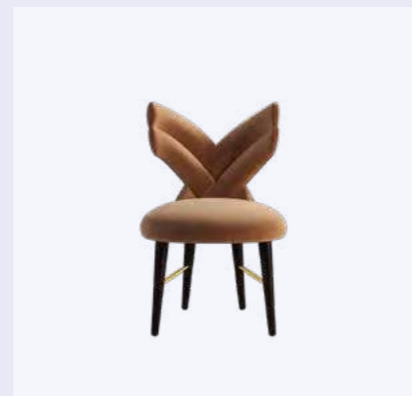
Kim Dining Chair

+



Gardner Dining Chair

+



Luna Dining Chair

+



Joan Dining Chair

+



Katharina Dining Chair

+



Shirley Dining Chair

+



Marlene Dining Chair



Angel Dining Chair



Fay Dining Chair



Brigid I Dining Chair



Brigid II Dining Chair

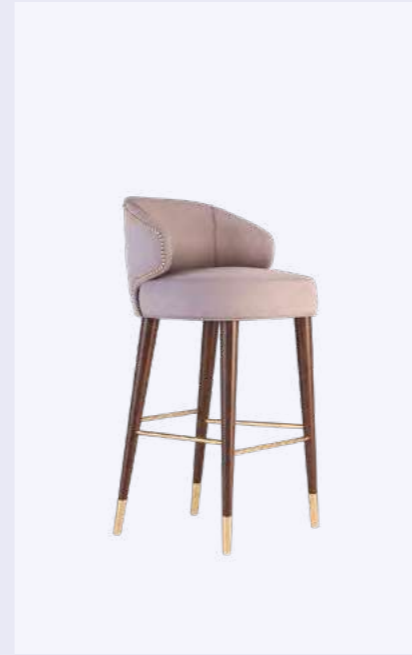


Brigid III Dining Chair



Winfrey Dining Chair

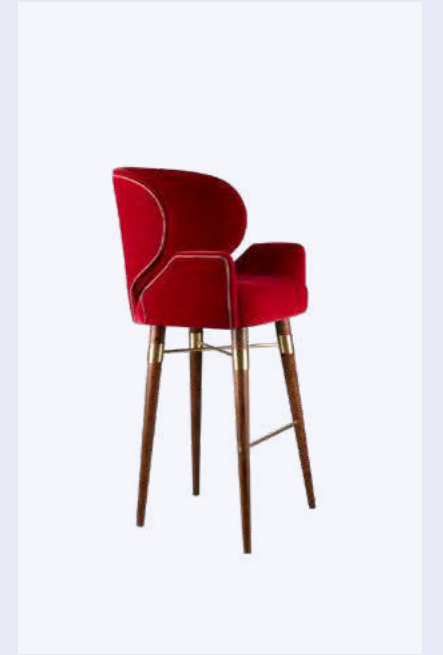
BAR CHAIRS



Tippi Bar Chair



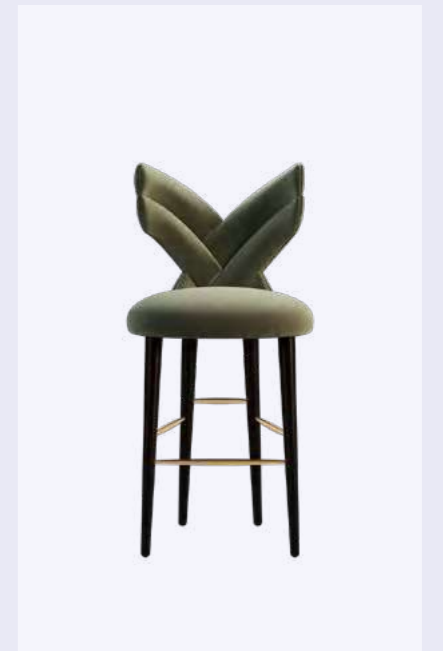
Louis Bar Chair



Louis I Bar Chair



Louis Twin Bar Chair



Luna Bar Chair



Karin Bar Chair

+



Anita Bar Chair

+



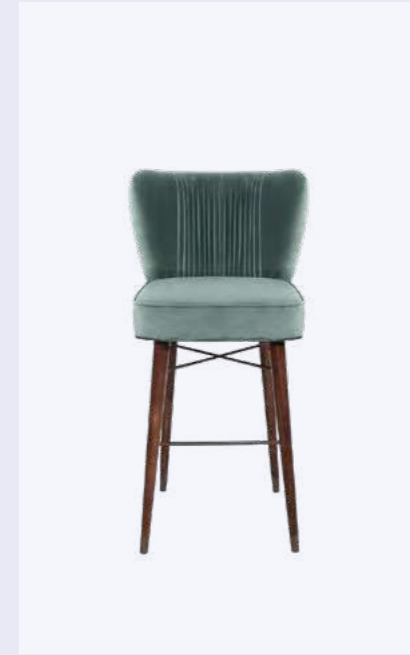
Caron Bar Chair

+



Lupino Bar Chair

+



Visconti Bar Chair

+



Katharina Bar Chair

+



Kelly Bar Chair

+



Kim Bar Chair

+



Gardner Bar Chair

+



Fay Bar Chair

+



Brigid Bar Chair

+



Winfrey Bar Chair

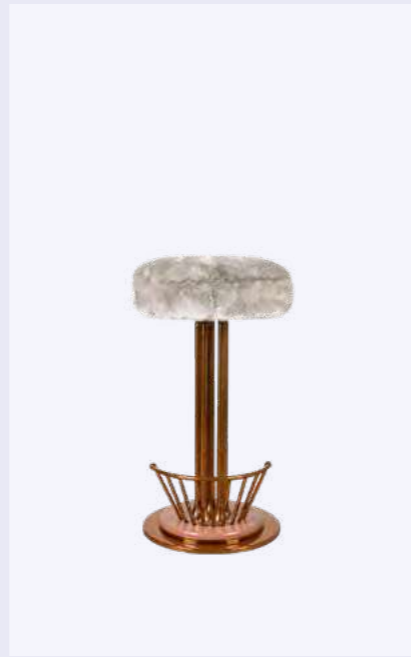
+



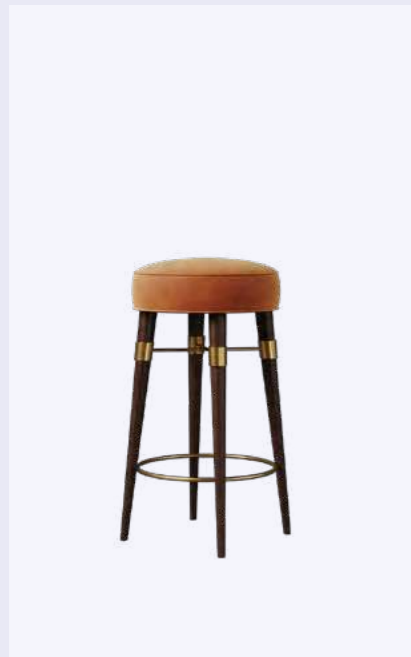
Angel Swivel Bar Stool



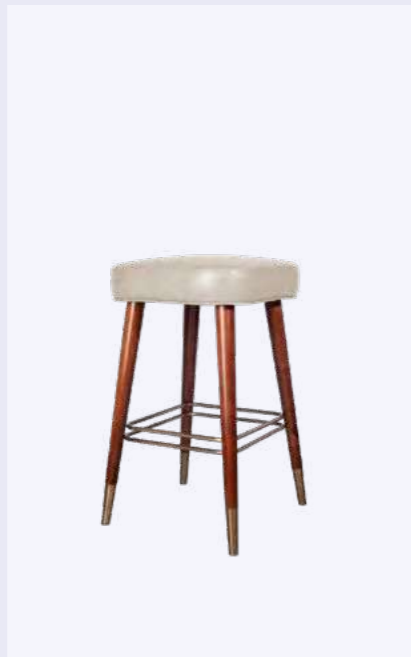
Vivien Swivel Bar Stool



Andy Bar Stool



Louis Bar Stool



Lauren Bar Stool

ARMCHAIRS



Tippi Armchair



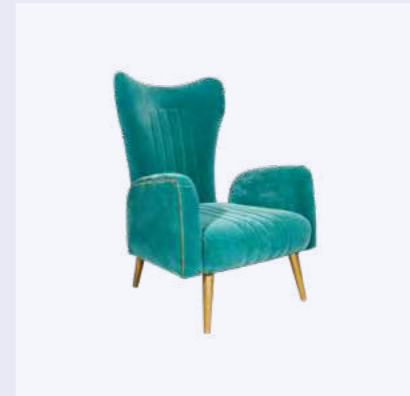
Louis Armchair



Louis I Armchair



Kim Armchair



Loren Armchair



Visconti Armchair



Scarlet Armchair



Greta Armchair



Ellen Armchair



Lucy Armchair

+



Dorothy Armchair

+



Lupino Armchair

+



Eartha Armchair

+



Romy Armchair

+



Simone Armchair

+



Marilyn Armchair

+



Jayne Armchair

+



Jeane Armchair

+



Doris Armchair

+



Charisse Armchair

+



Peggy Armchair

+

SOFA



Dorothy Sofa

+



Margret Sofa

+



Romy Sofa

+



Simone Modular Sofa

+



Carole Sofa

+



Nancy Sofa

+



Swanson Sofa

+



Jeane Sofa

+



Hedy Sofa

+



Peggy Sofa

+



Hayworth Sofa

+



Margret Twin Seat

+



Tippi Twin Seat

+

Anita Twin Seat

+



Visconti Twin Seat

+

Kelly Twin Seat

+



Eartha Day Bed

+

Nancy Chaise Longue

+



STOOLS



Sharon Bench

+

Ginger Bench

new



+



Mamie Bench

+

Elke Bench

+

Donna Stool

+



Abbe Stool

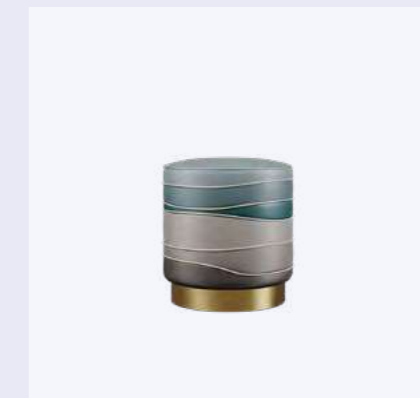
+

Charisse Stool

+

Colette Stool

+





Beth Stool



Julie Stool



Nico Stool



Audrey Stool



Andy Stool



Louis Stool



Betty Stool

BEDS



Lisi Bed



Valerie Bed



Tammi Bed



Linda Bed



Vitti Bed

The Iconic Family

Drawing inspiration from the illustrious legacy of Louis Armstrong, a legendary jazz trumpeter, and singer, Ottiu has crafted the exquisite Mid-Century Modern Louis Family.

Louis offers the flexibility of customization, allowing you to select from a diverse range of finishes tailored to your unique preferences.

Our design pieces can be customized and are available in different finishes



Louis Dining Chair

Louis Armstrong was a foundational influence on jazz, shifting the focus of music from collective improvisation to solo performance. "If I don't practice for a day, I know it. If I don't practice for two days, the critics know it. And if I don't practice for three days, the public knows it". Inspired by these words, Ottiu joined all its forces to create the Louis Mid-Century Modern Dining Chair.

MATERIALS & FINISHES

Fabric: Cotton Velvet

Legs: Smoked Walnut Wood

Details: Polished Brass

DIMENSIONS

W 52 cm | 20.5"

D 57 cm | 22.4"

H 84 cm | 33.1"

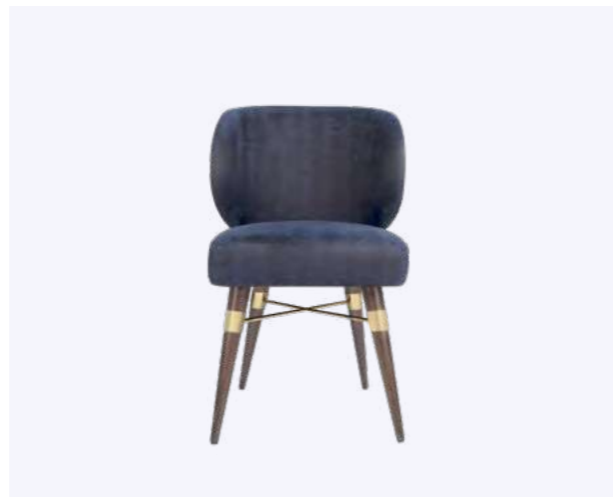
SH 49 cm | 19.3"

COLLECTION

Bar Chair +

Armchairs +

Stool +





Louis I Dining Chair



MATERIALS & FINISHES
Fabric: Jacquard Velvet, Velvet
Legs: Smoked Walnut Wood
Details: Brushed Copper Steel

DIMENSIONS
W 52 cm | 20.5"
D 57 cm | 22.4"
H 84 cm | 33.1"
SH 49 cm | 19.3"

COLLECTION
Bar Chair +
Armchairs +
Stool +



*If you have to ask
what jazz is, you'll
never know.*

Louis Armstrong

Louis & Louis I Bar Chair



MATERIALS & FINISHES

Fabric: Cotton Velvet
Legs: Smoked Walnut Wood
Details: Brushed Brass

DIMENSIONS

W 52 cm | 20.5"
D 57 cm | 22.4"
H 111.5 cm | 43.9"
SH 74.5 cm | 29.3"

COLLECTION

Dining Chairs +
Armchairs +
Stool +



Louis Twin Bar Chair



MATERIALS & FINISHES

Fabric: Cotton Velvet
Legs: Lacquered Legs
Details: Polished Brass

DIMENSIONS

W 120 cm | 47.2"
D 57 cm | 22.4"
H 105 cm | 41.3"
SH 80 cm | 31.5"

COLLECTION

Dining Chairs +
Armchairs +
Stool +

Louis Bar Stool



MATERIALS & FINISHES

Fabric: Velvet
Legs: Smoked Walnut Wood
Details: Brushed Brass

DIMENSIONS

DIA 40 cm | 15.7"
H 77 cm | 30.3"

COLLECTION

Dining Chairs +
Armchairs +
Stool +



Louis Stool



MATERIALS & FINISHES
Fabric: Jacquard Velvet
Legs: Smoked Walnut Wood
Details: Polished Brass

DIMENSIONS
DIA 40 cm | 15.7"
H 46 cm | 18.1"

COLLECTION
Bar Chair +
Dining Chairs +
Armchairs +

Louis Armchair



MATERIALS & FINISHES

Fabric: Fur Velvet and
Jacquard Velvet
Legs: Smoked Walnut Wood
Details: Brushed Brass

DIMENSIONS

W 76 cm | 29.9"
D 77 cm | 30.3"
H 77 cm | 30.3"
SH 40 cm | 15.7"

COLLECTION

Bar Chair +
Dining Chairs +
Stool +



Louis I Armchair

This newest armrest armchair version of one of our most prestigious pieces will offer even more comfort, highlighting the modern mid-century design. Featuring smoked walnut wood legs and upholstered in smooth textiles, the Louis I Armchair will surely be a decorative statement in your luxury décor.

MATERIALS & FINISHES

Fabric: Basket Faux Leather, Velvet
Legs: Lacquered Legs
Details: Brushed Copper Steel

DIMENSIONS

W 77 cm | 30.3"
D 77 cm | 30.3"
H 77 cm | 30.3"
SH 40 cm | 15.7"

COLLECTION

Bar Chair +
Dining Chairs +
Stool +



Metallic Chairs

Ottiu's metallic chairs showcase the shimmering and reflective qualities of metal, creating a sleek and modern aesthetic that will impress your guests. The metal legs exude a subtle shine that adds a touch of luxury and sophistication to your décor space.



Our design pieces can be customized and are available in different finishes

Angel Swivel Bar Stool

Beautiful California-born Angel Tompkins started her career out as a model before attempting an on-camera career in the late 60s. Angel made her major film debut as a seductive blonde in the comedy "I Love My Wife" and was nominated for a Golden Globe Award.

Reinterpreting the mid-century lifestyle based on her charming look and talent, Ottiu designers conceived this collection.

MATERIALS & FINISHES

Fabric: Velvet
Legs: Polished Gold and
Lacquered Steel

DIMENSIONS

W 67 cm | 26.4"
D 59 cm | 23.2"
H 114 cm | 44.9"
SH 75.5 cm | 29.7"

COLLECTION

Dining Chair +





Angel Dining Chair



MATERIALS & FINISHES
Fabric: Cotton Velvet
Legs: Lacquered Steel Legs
Details: Polished Brass

DIMENSIONS
W 67 cm | 26.4"
D 59 cm | 23.2"
H 74 cm | 29.1"
SH 47 cm | 18.5"

COLLECTION
Bar Stool +

Andy Bar Stool

Andy Warhol emerged as a significant artist in the New York art scene in the 60s and was one of the most important and provocative filmmakers at the time. His works often explored popular culture, consumerism, and celebrity. His works include some of the most iconic pop art pieces in history, such as his Campbell's Soup Cans, Marilyn Monroe prints, and his silkscreen paintings of Elvis Presley. Influenced by such admirable artist, Ottiu designed the Andy Collection.

MATERIALS & FINISHES

Fabric: Fur

Legs: Polished Copper and
Lacquered Steel Leg

Structure: Polished Copper and
lacquered steel

DIMENSIONS

DIA 42 cm | 16.5"

H 76 cm | 29.9"

COLLECTION

Stool +



Andy Stool



MATERIALS & FINISHES
Fabric: Fur
Structure: Polished Brass

DIMENSIONS
DIA 42 cm | 16.5"
H 40 cm | 15.7"

COLLECTION
Bar Stool +

Nico Stool



MATERIALS & FINISHES
Fabric: Velvet
Structure: Polished Brass

DIMENSIONS
DIA 44 cm | 17.3"
H 40 cm | 15.7"

Winfrey Dining Chair



MATERIALS & FINISHES
Fabric: Cotton velvet
Details: Capitoné
Structure: Aged brushed brass

DIMENSIONS
W 64 cm | 25.2"
D 57 cm | 22.4"
H 65 cm | 25.6"
SH 49 cm | 19.3"

COLLECTION
Bar Chair +

Winfrey Bar Chair

Ottiu conceived this timeless chair inspired by the glamorous living rooms of the Hollywood's years. Combining velvet with aged brushed copper, the Winfrey Mid-Century Modern Bar Chair will make you dream about the golden era's glamour. The Winfrey Mid-Century Modern Bar Chair a perfect piece for your home décor or luxurious commercial space.

MATERIALS & FINISHES
Fabric: Velvet
Structure: Aged Brushed Copper
Details: Capitoné;

DIMENSIONS
W 58 cm | 22.8"
D 50 cm | 19.7"
H 92 cm | 36.2"
SH 74 cm | 29.1"

COLLECTION
Dining Chair +



Winfrey Mid-Century Modern Bar Chair will make you dream about the Hollywood Golden Era.

Winfrey Bar Chair





Lupino Dining Chair

Ida Lupino, that once said “I’d love to see more women working as directors and producers”, created her independent production company. During her 48-year-old career, she appeared in 59 movies most of them in the United States. So, to honor her successful career, Ottiu designed the Lupino Mid-Century Dining Chair. Its smooth cotton velvet and polished gold steel legs make it the perfect interior design addition.

MATERIALS & FINISHES

Fabric: Cotton Velvet

Legs: Polished Gold Steel

Details: Pleats

DIMENSIONS

W 73 cm | 28.7"

D 53 cm | 20.9"

H 79 cm | 31.1"

SH 45 cm | 17.7"

COLLECTION

Bar Chair +

Armchair +



Lupino Bar Chair

From the Lupino family was born this classic piece, inspired by one of the most independent women from the Hollywood golden era. With Ida Lupino's beauty and quotes in mind, Ottiu created the Lupino Mid-Century Modern Bar Chair. With polished gold steel legs and luxurious cotton velvet upholstery, this bar chair is the perfect addition to living spaces for those who appreciate sophisticated and luxury décor. It exhales glamour and is a must-have in your home or hospitality project.

MATERIALS & FINISHES

Fabric: Cotton Velvet

Legs: Polished Gold Steel

Details: Pleats

DIMENSIONS

W 72 cm | 28.3"

D 55 cm | 21.7"

H 96 cm | 37.8"

SH 77 cm | 30.3"

COLLECTION

Dining Chair +

Armchair +



Lupino Armchair



MATERIALS & FINISHES

Fabric: Cotton Velvet
Legs: Polished Gold Steel
Details: Pleats

DIMENSIONS

W 100 cm | 39.4"
D 66 cm | 26"
H 83 cm | 32.7"
SH 42 cm | 16.5"

COLLECTION

Dining Chair +
Bar Chair +





Margret Twin Seat



MATERIALS & FINISHES
Fabric: Satin Look
Legs: Brushed Gold Steel

DIMENSIONS
W 160 cm | 63"
D 97 cm | 38.2"
H 75 cm | 29.5"
SH 42 cm | 16.5"

COLLECTION
Sofa +

*The dazzling
Margret Sofa
tributes the iconic
Ann-Margret.*

Margret Twin-Seat



Margret Sofa

Ann-Margret is a 60s captivating actress, singer and dancer who started her career with a fresh and independent spirit, always recognized by her flaring beauty and sexiness. The Margret Contemporary Sofa's rich colors and voluptuous shapes were inspired by this fabulous golden era red-head beauty. Featuring a show-stopping embroidery velvet upholstery over brushed gold steel legs, this mid-century modern sofa is guaranteed to bring old Hollywood glamour and grandeur to your contemporary living room.

MATERIALS & FINISHES

Fabric: Satin Look

Legs: Brushed Gold Steel

DIMENSIONS

W 342 cm | 134.6"

D 140 cm | 55.1"

H 86.5 cm | 34.1"

SH 42 cm | 16.5"

COLLECTION

Twin Seat +



Katharina Dining Chair

Known for her fierce independence and spirited personality, Katharine Hepburn was the leading star of Hollywood for 60 years. In addition to being brilliant on the screen, she was also a woman who defied standards and scandalized the industry back in the 30s. In honor to that star with the most Oscars in the world, the Katharina Collection was designed.

Perfect for any dining room with a mid-century modern décor, the Katharina dining chair has slender polished silver steel legs supporting a high-quality linen look fabric. On the back, a beautifully polished silver steel handle signifies Hepburn's strength and vigorousness.

MATERIALS & FINISHES

Fabric: Linen Look

Legs: Polished Silver Steel

Details: Polished Silver Steel

DIMENSIONS

W 64 cm | 25.2"

D 52 cm | 20.5"

H 71 cm | 28"

SH 45 cm | 17.7"

COLLECTION

Bar Chair +



Katharina Bar Chair



MATERIALS & FINISHES

Fabric: Cotton velvet

Legs: Polished Brass

Details: Polished Brass

DIMENSIONS

W 64 cm | 25.2"

D 55 cm | 21.7"

H 102 cm | 40.2"

SH 77 cm | 30.3"

COLLECTION

Dining Chair +



Brigid Dining Chairs

Born in one of the Royal Parks of London, Angela Brigid Lansbury was one prestigious Hollywood stars of the 50s. Inspired by the Hollywood Golden Era and her talent, Ottiu's designers conceived the Brigid collection. Regardless of modern mid-century style, outfitting a table with suited seating can transform a dining room instantly.

MATERIALS & FINISHES

Fabric: Boucle / Jacquard Velvet
Legs: Polished Silver Steel /
Lacquered Steel

DIMENSIONS

BRIGID I

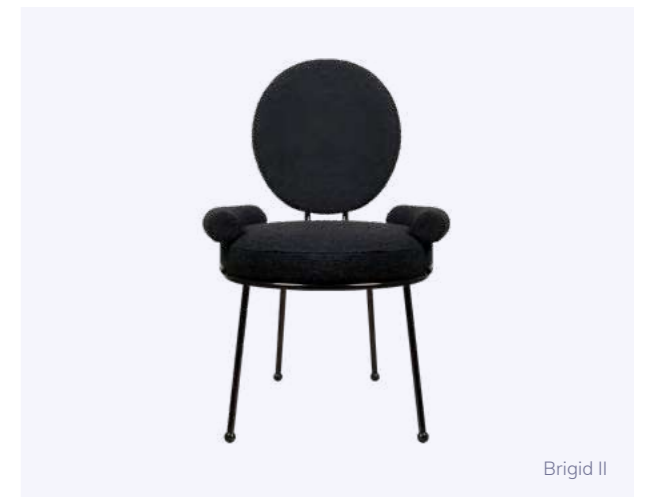
W 50 cm | 19.7"
D 63 cm | 24.8"
H 90 cm | 35.4"
SH 46 cm | 18.1"

BRIGID II, BRIGID III

W 58 cm | 22.8"
D 63 cm | 24.8"
H 90 cm | 35.4"
SH 46 cm | 18.1"

COLLECTION

Bar Chair +



Brigid Bar Chair



MATERIALS & FINISHES
Fabric: Embroidery Velvet
Legs: Polished Gold Steel

DIMENSIONS
W 50 cm | 19.7"
D 67 cm | 26.4"
H 122 cm | 48"
SH 78 cm | 30.7"

COLLECTION
Dining Chair +





Fay Dining Chair

Brought up in Los Angeles at an early age, the Canadian-born Fay Wray began her career as a heroine in westerns at Universal during the silent era. Her brilliant character provided a combination of sex appeal, vulnerability, and lung capacity.

Considered one of the muses of the Hollywood Golden Era and the beautiful star of King Kong, Ottiu designers tribute Fay by conceiving this opulent dining chair.

Upholstered in cotton velvet embellished with gold studs on its back, Fray is supported by four elegant lacquered steel legs. This mid-century modern dining chair is a memorable design piece that will perfectly fit in any contemporary décor.

MATERIALS & FINISHES

Fabric: Velvet

Legs: Lacquered Steel

Details: Gold Studs

DIMENSIONS

W 53 cm | 20.9"

D 54 cm | 21.3"

H 76 cm | 29.9"

SH 47 cm | 18.5"

COLLECTION

Bar Chair +

1. Berlin suspension lamp by CREATIVEMARY®
2. Nomad table lamp by CREATIVEMARY®
3. Cortez III dining table by MALABAR®
4. Fay dining chair
5. Fay bar chair



Fay Bar Chair



MATERIALS & FINISHES

Fabric: Velvet
Legs: Lacquered Steel
Details: Gold Studs

DIMENSIONS

W 53 cm | 20.9"
D 54 cm | 21.3"
H 103 cm | 40.6"
SH 75 cm | 29.5"

COLLECTION

Dining Chair +



Anita Bar Chair

The Anita Mid-Century Modern Bar Chair is a piece where lush, beauty and delicacy hide the fierceness and unbridled sensuality of one of the 50s iconic personalities: Anita Ekberg. This beautiful chair has an exquisite velvet upholstery supported by long smoked walnut wood legs finished with extremely elegant brushed brass details. Just as Ekberg, this bar chair will fit any living set through its charming beauty and figure, being the center piece in your décor set.

MATERIALS & FINISHES

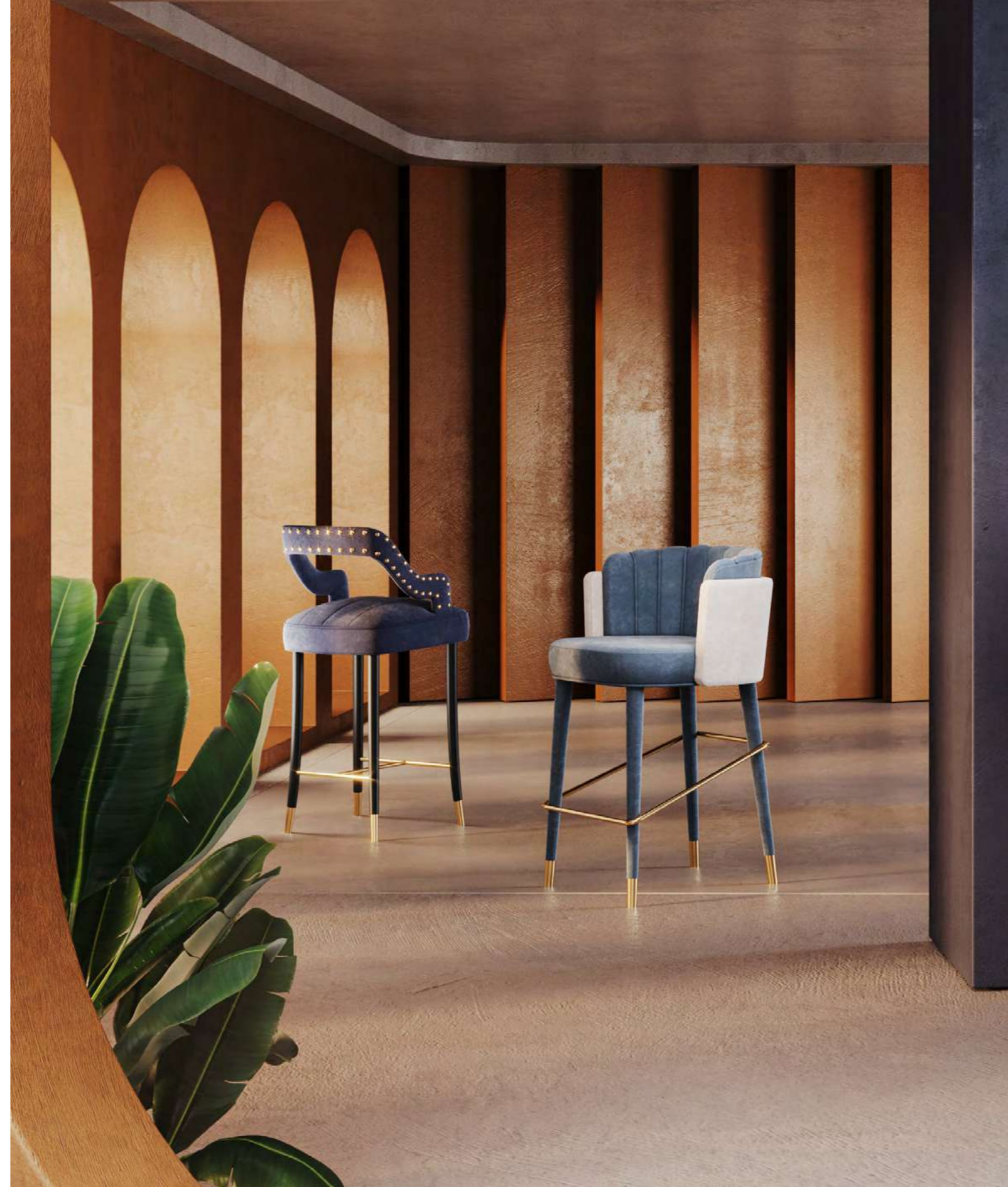
Fabric: Velvet and Engraved Velvet
Legs: Smoked Walnut Wood
Details: Brushed Brass

DIMENSIONS

W 60 cm | 23.6"
D 58 cm | 22.8"
H 109 cm | 42.9"
SH 77 cm | 30.3"

COLLECTION

Dining Chair +
Twin Seat +



Anita Twin Seat



MATERIALS & FINISHES

Fabric: Cotton velvet
Legs: Lacquered Legs
Details: Polished Brass

DIMENSIONS

W 140 cm | 55.1"
D 64 cm | 25.2"
H 75 cm | 29.5"
SH 45 cm | 17.7"

COLLECTION

Bar Chair +
Dining Chair +

Anita Dining Chair



MATERIALS & FINISHES

Fabric: Satin, Jacquard Velvet
Legs: Lacquered Legs
Details: Brushed Brass

DIMENSIONS

W 67 cm | 26.4"
D 64 cm | 25.2"
H 80 cm | 31.5"
SH 46 cm | 18.1"

COLLECTION

Bar Chair +
Twin Seat +



Versatile and charming, Anita fits perfectly in both residential and gastronomic spaces.

Marlene Dining Chair

Marlene is the artistic name for the German actress Marie Magdalene Dietrich. In her early teens, Marlene gave up music to explore acting. And her beauty, voice, and sensuality made her one of the world's most glamorous Hollywood stars.

Inspired by her self-evident aura of sophistication, Ottiu designers conceived the mid-century modern curvy Marlene dining chair. Dressed up in a satin fabric and supported by lacquered steel legs, the Marlene dining chair will bring the Hollywood Golden Era's vibes to your dining room décor.

MATERIALS & FINISHES

Fabric: Satin

Legs: Lacquered Steel

Details: Polished Brass

DIMENSIONS

W 63 cm | 24.8"

D 60 cm | 23.6"

H 82 cm | 32.3"

SH 47 cm | 18.5"





Marilyn Armchair



MATERIALS & FINISHES

Fabric: Cotton Velvet

Legs: Polished Brass

DIMENSIONS

W 86 cm | 33.9"

D 67 cm | 26.4"

H 76 cm | 29.9"

SH 41 cm | 16.1"

Loren Armchair

Sophia Loren is an Italian film actress of Hollywood's golden era. Encouraged to enroll in acting lessons after entering a beauty pageant, Loren began her film career in 1950 at age 15. Throughout her career, Loren has been recognized for her timeless beauty and has worked as a fashion model and as the face of several brands. She has also been an advocate for numerous charities and has been honored for her humanitarian work.

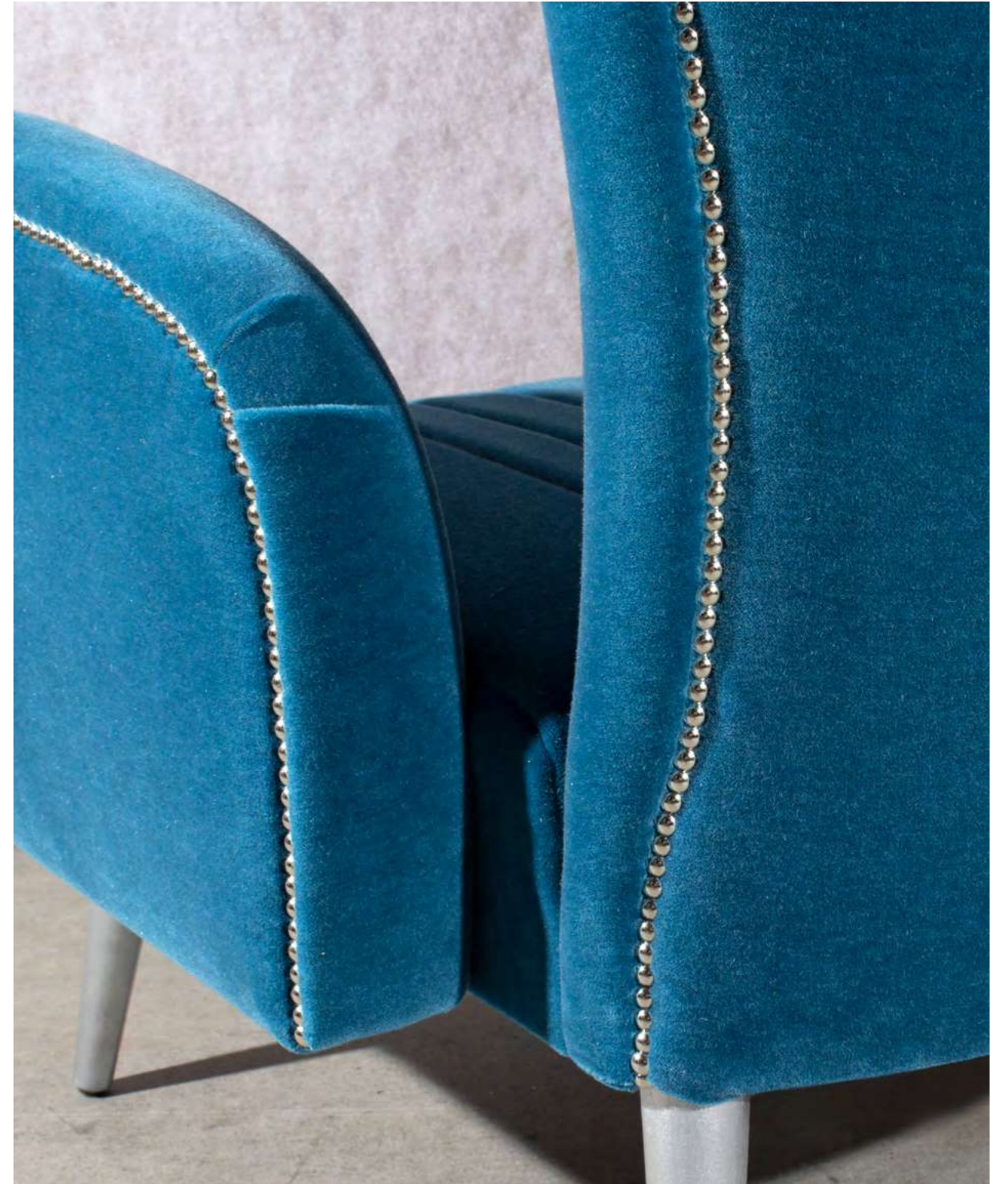
With the Contemporary Loren Armchair, we revisit this Hollywood legend and created this mid-century modern upholstery piece composed with subtle lines as well as a strong character.

MATERIALS & FINISHES

Fabric: Cotton Velvet
Legs: Polished Gold Steel
Details: Gold Studs

DIMENSIONS

W 77 cm | 30.3"
D 80 cm | 31.5"
H 103 cm | 40.6"
SH 43 cm | 16.9"





Jeane Armchair

Jean Harlow was a 1930s Hollywood reigning symbol and the greatest unconventional actress who inspired Ottiu's designers to create this lips-inspired armchair. The Jeane armchair shows its passionate essence through its enchanting design lines upholstered in high-quality cotton velvet. Jeane's seductive top embellished with fringes rests on elegant lacquered legs. Turning the Jeane Mid-century Modern Armchair itself into an opulent yet comfortable ideal piece for a deluxe living set.

MATERIALS & FINISHES

Fabric: Cotton Velvet

Legs: Lacquered Legs

Details: Polished Brass, Fringes

DIMENSIONS

W 98 cm | 38.6"

D 76 cm | 29.9"

H 77 cm | 30.3"

SH 45 cm | 17.7"

COLLECTION

Sofa +

1. Almond suspension lamp by CREATIVEMARY®

2. Jeane armchair

3. Peggy sofa

Jeane Sofa



MATERIALS & FINISHES

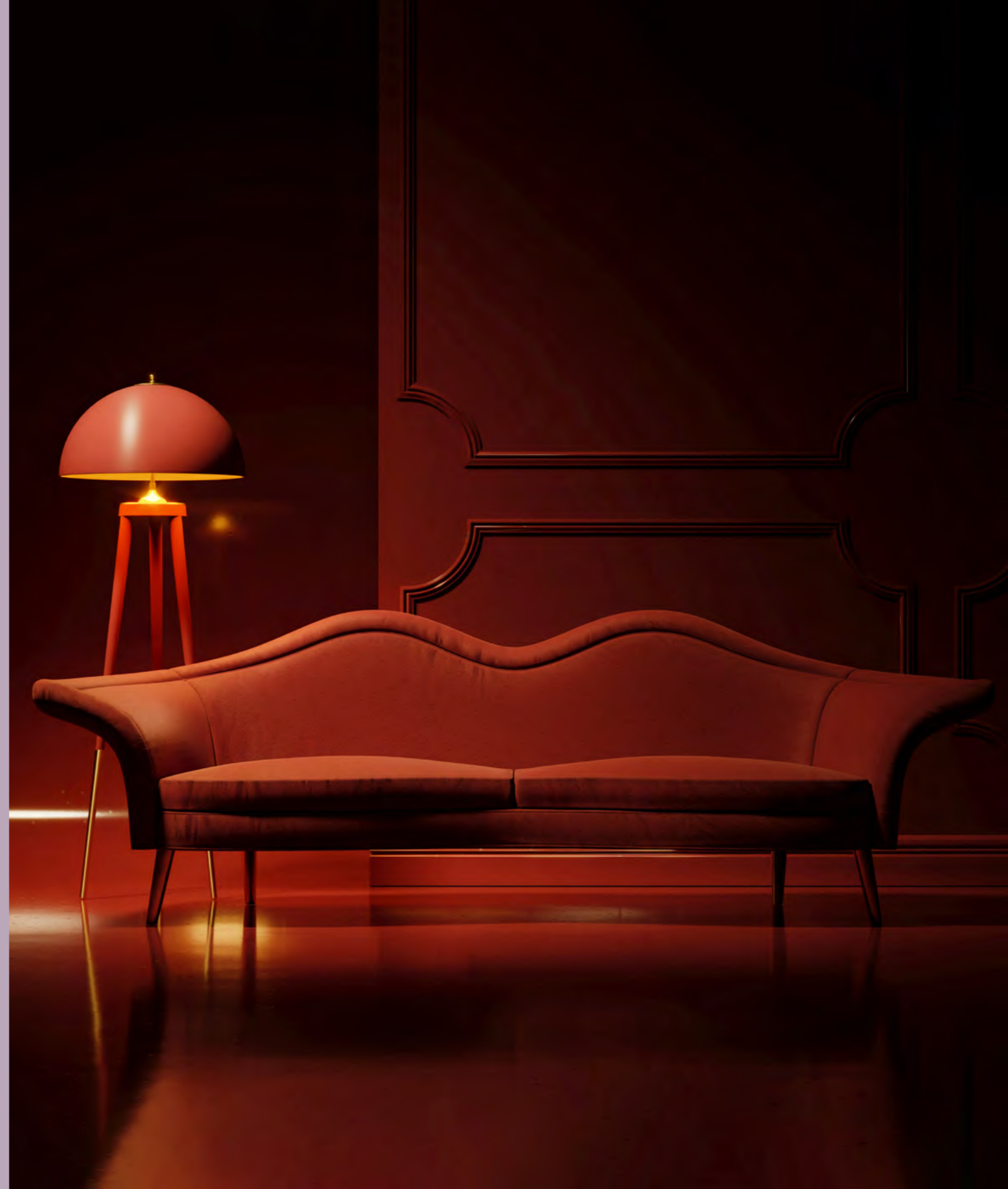
Fabric: Cotton velvet
Legs: Polished Gold Steel

DIMENSIONS

W 252 cm | 99.2"
D 86 cm | 33.9"
H 83 cm | 32.7"
SH 43 cm | 16.9"

COLLECTION

Armchair +



Hedy Sofa



MATERIALS & FINISHES

Fabric: Mix Bouclé

Details: Brushed Brass

DIMENSIONS

W 240 cm | 94.5"

D 98 cm | 38.6"

H 82 cm | 32.3"

SH 42 cm | 16.5"

Greta Armchair



Materials & Finishes

Fabric: Cotton Velvet

Legs: Brushed Gold Steel

Details: Pleats, Gold Studs

DIMENSIONS

W 92 cm | 36.2"

D 79 cm | 31.1"

H 88 cm | 34.6"

SH 43 cm | 16.9"

Carole Sofa



MATERIALS & FINISHES

Fabric: Cotton Velvet and Padded

Faux Leather

Legs: Lacquered Metal

Details: Polished brass

DIMENSIONS

W 200 cm | 78.7"

D 94 cm | 37"

H 80 cm | 31.5"

SH 41 cm | 16.1"

Hayworth Sofa



MATERIALS & FINISHES

Fabric: Cotton velvet

Legs: Polished Gold Steel

DIMENSIONS

W 180 cm | 70.9"

D 74 cm | 29.1"

H 79 cm | 31.1"

SH 44 cm | 17.3"

Ginger Bench

Ginger Rogers, born Virginia Katherine McMath, was an iconic American actress, singer, and dancer who achieved tremendous success during the Golden Age of Hollywood. With her charm, elegance, and remarkable talent, Ginger captivated audiences worldwide.

This exquisite bench captures the essence of Ginger Rogers' iconic style, featuring sleek lines and a touch of glamour. With its refined design and deluxe materials, such as brass, velvet, and Tricotine fringes, this bench invites you to take a seat and embrace the timeless allure of a Hollywood legend.

The Ginger bench becomes a captivating highlight within any space. With its refined design and sophisticated presence, it effortlessly commands attention and elevates the overall aesthetic of the room.

MATERIALS & FINISHES
Fabric: Matte Velvet
Legs: Polished Brass
Details: Polished Brass, Tricotine Fringes

DIMENSIONS
W 162 cm | 63.8"
D 62 cm | 24.4"
H 51 cm | 20.1"
SH 42 cm | 16.5"



Subtle Pop Up of Color

Elevate your interior design space with a burst of color yet a touch of sophistication. Lacquered legs or feet offer the ideal solution for those seeking to infuse their environment with a pop-up of captivating hues. Whether you desire a bold statement or a subtle accent, the lacquer finish adds a layer of visual intrigue, enhancing the overall aesthetic appeal of any room. The options are endless.

Our design pieces can be customized and are available in different finishes





Shirley Dining Chair

For much of the decade, Shirley Temple was one of the Hollywood's greatest box-office attractions. With her spirited singing and dancing, Shirley and her optimistic films provided a very welcome escape from difficult times. So inspired by the Hollywood star Shirley, Ottiu designers conceived the Shirley dining chair.

MATERIALS & FINISHES

Fabric: Velvet

Legs: Lacquered Legs

Details: Polished Brass, Gold Studs

DIMENSIONS

W 58 cm | 22.8"

D 60 cm | 23.6"

H 80 cm | 31.5"

SH 47 cm | 18.5"

1. Pearl suspension lamp by CREATIVEMARY®

2. Henry dining table by WOODTAILORS®

3. Shirley dining chair

Joan Dining Chair



MATERIALS & FINISHES
Fabric: Cotton Velvet, Leather
Legs: Lacquered Legs
Details: Polished Brass

DIMENSIONS
W 65 cm | 25.6"
D 62 cm | 24.4"
H 78 cm | 30.7"
SH 48 cm | 18.9"

Ingrid Dining Chair



MATERIALS & FINISHES
Fabric: Cotton velvet
Legs: Lacquered Legs
Details: Polished Brass

DIMENSIONS
W 57 cm | 22.4"
D 58 cm | 22.8"
H 79 cm | 31.1"
SH 48 cm | 18.9"

Helen Dining Chair

Helen Williams Jackson was a dancer and fashion model. Helen studied dance, art, and drama before obtaining work as a stylist for a New York photography studio.

Drawing from her beauty, Ottiu's designers conceived this mid-century modern dining chair. Dressed up in cotton velvet, supported by lacquered wood legs, and embellished with polished gun metal steel accents. The Helen Dining chair will complete the most refined dining schemes, featuring elegance yet comfort through a mid-century modern design.

MATERIALS & FINISHES

Fabric: Cotton Velvet

Legs: Lacquered Legs

Details: Polished Gun Metal Steel

DIMENSIONS

W 64 cm | 25.2"

D 61 cm | 24"

H 73 cm | 28.7"

SH 45 cm | 17.7"

1. Miami I suspension lamp by CREATIVEMARY®

2. Henry dining table by WOODTAILORS®

3. Helen dining chair



Caron Dining Chair



MATERIALS & FINISHES

Fabric: Velvet, Paded Jacquard

Legs: Lacquered Legs

Details: Polished Brass, Gold Studs

DIMENSIONS

W 52 cm | 20.5"

D 60 cm | 23.6"

H 81 cm | 31.9"

SH 47 cm | 18.5"

COLLECTION

Bar Chair +





Caron Bar Chair

Inspired by the lovers' capital, Paris, Ottiu designed the most romantic bar chair. Paris isn't known only for its romantic climate; it is especially known for its museums and architectural landmarks. The Mid-Century Modern Bar Chair has upholstered legs and a synthetic leather upholstery. Decorate your living room with a sophisticated furniture piece that incorporates all of the mid-century elements and you'll feel surrounded by Hollywood's golden era.

MATERIALS & FINISHES

Fabric: Faux Leather, Paded Faux Leather

Legs: Upholstered Legs

Details: Polished Stainless Steel, Silver Studs

DIMENSIONS

W 52 cm | 20.5"

D 60 cm | 23.6"

H 108 cm | 42.5"

SH 77.5 cm | 30.5"

COLLECTION

Dining Chair +



Karin Dining Chair

Known in the late '60s as a Bond girl, Karin Dor was a German actress who shines during the Hollywood Golden Era. Her attractive redhead made an indelible impression on the Austrian director, Harald Reinl, and this paved the way to higher-profile roles. In later years, she performed mainly stages roles but still appeared in some films.

Influenced by her glamour and sensuality, Ottiu designers conceived the Karin dining chair. Upholstered in cotton velvet, featuring lacquered wood legs, this mid-century modern armrest dining chair embodies the Hollywood's sophistication with a comfort design. The Karin Dining Chair will recreate a perfect movie set.

MATERIALS & FINISHES

Fabric: Cotton Velvet

Legs: Lacquered Legs

Details: Gold Studs, Polished Brass

DIMENSIONS

W 80 cm | 31.5"

D 77.5 cm | 30.5"

H 105.5 cm | 41.5"

SH 49 cm | 19.3"

COLLECTION

Bar Chair +



Karin Bar Chair



MATERIALS & FINISHES

Fabric: Cotton velvet

Legs: Lacquered Legs

Details: Polished Brass,
Gold Studs

DIMENSIONS

W 60 cm | 23.6"

D 60 cm | 23.6"

H 112 cm | 44.1"

SH 75 cm | 29.5"

COLLECTION

Dining Chair +





Vivien Swivel Bar Chair

Vivien Leigh was a British stage and film actress. Also known as Lady Olivier, she won two Academy Awards for Best Actress for her performances as Scarlett O'Hara in "Gone with the Wind" and Blanche DuBois in the film version of "A Streetcar Named Desire." Inspired by Vivien's triumphs, Ottiu designers conceived the Vivien Swivel Bar Chair.

The stylish bar stool provides a sense of authenticity, upholstered in fur velvet and mix jacquard velvet featuring a brushed brass base. With a seat that takes you through 360 degrees, it makes the swivel stool easy to position at any bar decor.

MATERIALS & FINISHES

Fabric: Fur Velvet, Mix Jacquard Velvet
Legs: Lacquered Leg
Details: Brushed Brass

DIMENSIONS

W 67 cm | 26.4"
D 55 cm | 21.7"
H 94 cm | 37"
SH 70 cm | 27.6"



Ellen Armchair

There are many dancers from the golden age of the Hollywood musicals who are now remembered. However, no dancer looked more like a doll than Vera-Ellen. She was also known for her graceful, flowing arm movements and her ability to move seamlessly between different dance styles. Her style was praised for its grace and elegance, and she was often compared to Ginger Rogers.

Vera-Ellen was especially known for her partnerships with Gene Kelly and Fred Astaire. Her dancing style was characterized by her light, bouncy jumps and her precise, delicate footwork. Her delicate and unique beauty inspired Ottiu to create the mid-Century Modern Ellen Armchair.

MATERIALS & FINISHES

Fabric: Bouclé

Legs: Lacquered Legs

DIMENSIONS

W 95 cm | 37.4"

D 75 cm | 29.5"

H 75 cm | 29.5"

SH 42 cm | 16.5"

- 1. Miami I suspension lamp by CREATIVEMARY®
- 2. Dahlia wall lamp by CREATIVEMARY®
- 3. Ellen armchair
- 4. Monticello center table by PORUS®
- 5. Peggy sofa



Kelly Twin Seat



MATERIALS & FINISHES

Fabric: Cotton velvet
Legs: Lacquered Legs
Details: Polished Brass, Gold Studs

DIMENSIONS

W 136 cm | 53.5"
D 56 cm | 22"
H 78 cm | 30.7"
SH 46 cm | 18.1"

COLLECTION

Bar Chair +
Dining Chair +



Kelly Bar Chair

The Mid-Century Modern Kelly Bar Chair has a back that recreates Grace Kelly's thin waist, in printed velvet and genuine leather, supported by elegant legs in smoked walnut wood with semi gloss finish. The structure is finished with a delicate touch of gold, complemented by gold studs that adorn the contours of the gracious backrest.

The Mid-Century Modern Kelly Bar Chair is the perfect choice for any contemporary living set or luxury commercial space.

MATERIALS & FINISHES

Fabric: Genuine Leather,
Printed Velvet

Legs: Smoked Walnut Wood

Details: Polished brass, Gold Studs

DIMENSIONS

W 56 cm | 22"

D 56 cm | 22"

H 120 cm | 47.2"

SH 81 cm | 31.9"

COLLECTION

Twin Seat +

Dining Chair +





Kelly Dining Chair

Grace Kelly inspired Ottiu's designers to create the Kelly family. This woman's career started in New York City theatrical productions and in October 1953 she won a Golden Globe Award, plus an Academy Award nomination in 1954. She gave up on her acting career at the age of 26 to marry Prince Rainier III and, therefore, becoming the Princess of Monaco. The Kelly Mid-Century Modern Dining Chair is structured in smoked walnut wood with semi gloss finish. It is the ideal choice for your modern living set or luxury commercial space.

MATERIALS & FINISHES

Fabric: Twill Printed Velvet, Jacquard Satin

Legs: Smoked Walnut Wood

Details: Polished Brass, Gold Studs

DIMENSIONS

W 56 cm | 22"

D 56 cm | 22"

H 78 cm | 30.7"

SH 46 cm | 18.1"

COLLECTION

Bar Chair +

Twin Seat +

1. Bamboo III suspension lamp by CREATIVEMARY®

2. Fly table lamp by CREATIVEMARY®

3. Katharina dining chair

4. Mon Ooh sideboard by MALABAR®

5. Buck Oval dining table by PORUS®

6. Kelly dining chair

7. Louis I dining chair

Kim Dining Chair



MATERIALS & FINISHES

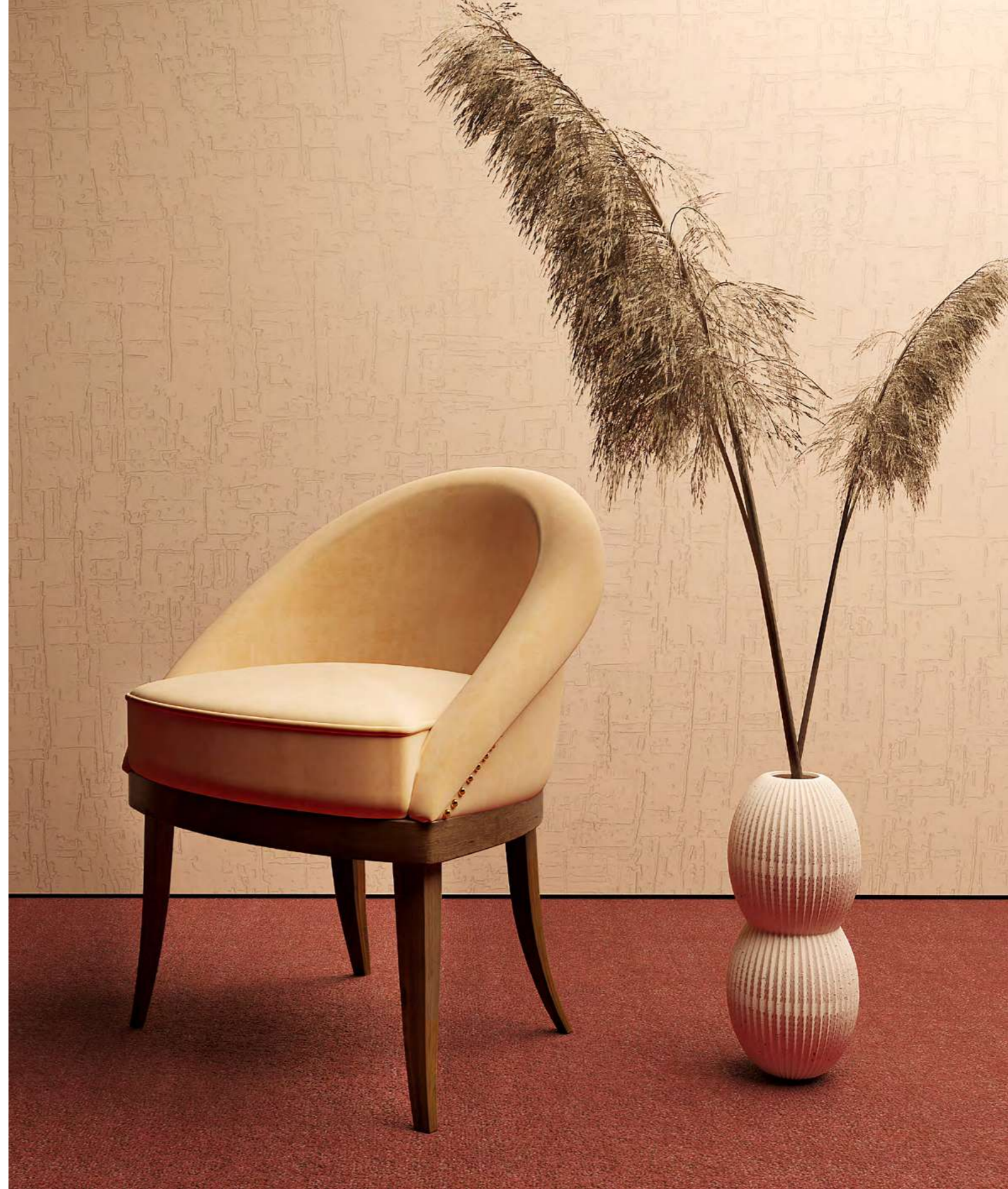
Fabric: Cotton Velvet
Legs: Lacquered Legs
Details: Gold Studs

DIMENSIONS

W 59.5 cm | 23.4"
D 54 cm | 21.3"
H 77 cm | 30.3"
SH 49 cm | 19.3"

COLLECTION

Bar Chair +
Armchair +





Kim Bar Chair

Kim Novak, a successful American actress, is best known for her performance as Madeline Elster in Alfred Hitchcock's classic thriller "Vertigo". Her character, Madeline Elster, is one of the most iconic figures in film history and is a classic representation of Hitchcock's "blonde" leading ladies. To honor her success, Ottiu created this piece with beautiful lacquered legs, giving a deluxe look to any bar or lounge area.

MATERIALS & FINISHES

Fabric: Jacquard Velvet, Fur Velvet

Legs: Lacquered Legs

Details: Brushed Brass, Gold Studs

DIMENSIONS

W 62 cm | 24.4"

D 58 cm | 22.8"

H 111 cm | 43.7"

SH 81 cm | 31.9"

COLLECTION

Dining Chair +

Armchair +





Kim Armchair

Kim Novak was a golden era's breathtaking face, a large-boned perfect blond star. The controversy around her image and inexperience as an actress turned her into a 50s and 60s superstar. Inspired by this woman, the peculiar curves of the Mid-Century Modern Kim Armchair is dressed in cotton velvet upholstery with gold studs on the back. Structured in smoked walnut wood legs, the Kim Armchair is a must-have in modern décor that transpires grace and style. Bring some glamour to your contemporary living space or interior design project with this new addition.

MATERIALS & FINISHES

Fabric: Cotton velvet
Legs: Smoked Walnut Wood
Details: Gold Studs

DIMENSIONS

W 79.5 cm | 31.3"
D 82 cm | 32.3"
H 80 cm | 31.5"
SH 46 cm | 18.1"

COLLECTION

Dining Chair +
Bar Chair +



Its eclectic and exquisite back will offer your living space a new character.

Scarlet Armchair



MATERIALS & FINISHES

Fabric: Cotton Velvet
Legs: Lacquered Legs
Details: Polished Brass, Gold Studs

DIMENSIONS

W 66 cm | 26"
D 72 cm | 28.3"
H 88 cm | 34.6"
SH 43 cm | 16.9"

Lucy Armchair



MATERIALS & FINISHES

Fabric: Cotton Velvet
Legs: Upholstered Legs
Details: Polished Brass

DIMENSIONS

W 92 cm | 36.2"
D 82 cm | 32.3"
H 82 cm | 32.3"
SH 40 cm | 15.7"

Gardner Dining Chair



MATERIALS & FINISHES

Fabric: Cotton Velvet
Legs: Upholstered and
Lacquered Legs
Details: Fabric Drapping and
Polished Brass

DIMENSIONS

W 55 cm | 21.7"
D 60 cm | 23.6"
H 79.5 cm | 31.3"
SH 46 cm | 18.1"

COLLECTION

Bar Chair +

Gardner Bar Chair



MATERIALS & FINISHES

Fabric: Cotton Velvet
Legs: Upholstered and
Lacquered Legs
Details: Fabric Drapping and
Polished Brass

DIMENSIONS

W 55 cm | 21.7"
D 60 cm | 23.6"
H 99 cm | 39"
SH 75 cm | 29.5"

COLLECTION

Dining Chair +



Luna Dining & Bar Chair

Ottiu conceived a charming and elegant piece inspired by the feminine seductiveness: the Luna Contemporary Dining Chair. To give it a special touch, a wing-shaped backrest was added, providing a unique style with extreme comfort. Its cotton velvet upholstery and brushed brass accents makes it a special creation, being a decorative statement to any living room with a modern and creative design. This dining chair will surely be the masterpiece in your home décor.

MATERIALS & FINISHES

Fabric: Cotton Velvet

Legs: Lacquered Legs

Details: Brushed Brass, Interlaced Volumes

DIMENSIONS

Dining Chair

W 51.5 cm | 20.3"

D 50 cm | 19.7"

H 79.5 cm | 31.3"

SH 45 cm | 17.7"

Bar Chair

W 51.5 cm | 20.3"

D 50 cm | 19.7"

H 105 cm | 41.3"

SH 72 cm | 28.3"

Timeless Design & Eternal Charm

In the realm of design, where trends come and go, wood chair legs hold a special place, exuding a sense of classic elegance that transcends fleeting trends. Incorporating these timeless designs into your surroundings ensures that your space will stand the test of time with grace and glamour.

Our design pieces can be customized and are available in different finishes



Tippi Dining Chair

Nathalie Hedren, also known as Tippi Hedren, is an American actress and successful fashion model. Having a strong commitment to animal rescue since 1969, while she was shooting in Africa, she created the Roar Foundation, which enabled her to contribute to the protection and preservation of lions and tigers. To honor her work, Ottiu designed the Mid-Century Modern Tippi Dining Chair.

MATERIALS & FINISHES

Fabric: Satin

Legs: Smoked Walnut Wood

Details: Brushed Brass, Gold Studs

DIMENSIONS

W 64 cm | 25.2"

D 63 cm | 24.8"

H 81 cm | 31.9"

SH 50 cm | 19.7"

COLLECTION

Bar Chair +

Armchair +

Twin Seat +



Tippi Bar Chair



MATERIALS & FINISHES

Fabric: Velvet

Legs: Smoked Walnut Wood

Details: Polished Brass, Gold Studs

DIMENSIONS

W 49.5 cm | 19.5"

D 53 cm | 20.9"

H 94.5 cm | 37.2"

SH 74 cm | 29.1"

COLLECTION

Dining Chair +

Armchair +

Twin Seat +



The Tippi bar chair is destined to grace any interior hospitality project with its resplendent presence.

Tippi Armchair



MATERIALS & FINISHES

Fabric: Chevron
Legs: Lacquered Legs
Details: Gold Studs

DIMENSIONS

W 76 cm | 29.9"
D 83 cm | 32.7"
H 77 cm | 30.3"
SH 45 cm | 17.7"

COLLECTION

Bar Chair +
Dining Chair +
Twin Seat +

Tippi Twin Seat



MATERIALS & FINISHES

Fabric: Linen Look
Legs: Lacquered Legs
Details: Polished Brass

DIMENSIONS

W 156.5 cm | 61.6"
D 64.5 cm | 25.4"
H 73 cm | 28.7"
SH 42 cm | 16.5"

COLLECTION

Dining Chair +
Bar Chair +
Armchair +

Visconti Dining Chair



MATERIALS & FINISHES

Fabric: Cotton Velvet
Legs: Smoked Walnut Wood
Details: Pleats, Polished Brass,
Gold Studs

DIMENSIONS

W 55 cm | 21.7"
D 58 cm | 22.8"
H 74 cm | 29.1"
SH 48 cm | 18.9"

COLLECTION

Bar Chair +
Twin Seat +
Armchair +

Visconti Bar Chair



MATERIALS & FINISHES

Fabric: Cotton Velvet
Smoked Walnut Wood |
Details: Pleats, Polished Brass,
Aged Copper Studs

DIMENSIONS

W 56 cm | 22"
D 58.5 cm | 23"
H 110 cm | 43.3"
SH 77 cm | 30.3"

COLLECTION

Dining Chair +
Twin Seat +
Armchair +

Visconti Armchair



MATERIALS & FINISHES

Fabric: Cotton Velvet
Legs: Lacquered Legs
Details: Pleats, Polished Brass

DIMENSIONS

W 75 cm | 29.5"
D 74 cm | 29.1"
H 78 cm | 30.7"
SH 41 cm | 16.1"

COLLECTION

Dining Chair +
Bar Chair +
Twin Seat +

Visconti Twin Seat



MATERIALS & FINISHES

Fabric: Cotton Velvet
Legs: Smoked Walnut Wood
Details: Pleats, Polished Brass,
Gold Studs

DIMENSIONS

W 154.5 cm | 60.8"
D 77.5 cm | 30.5"
H 86 cm | 33.9"
SH 47.5 cm | 18.7"

COLLECTION

Dining Chair +
Bar Chair +
Armchair +

Lauren Bar Stool

Born as Betty Joan Perske, the New York City-native actress Lauren Bacall was one of the Hollywood Golden Era stars. Because of her unquestionable beauty, Lauren appeared on one of the most popular USA magazines covers, Harper's Bazaar. And this apparition opened the way for her career as an actress.

Inspired by her glamorous, Ottiu designers conceived the Lauren Bar Stool. Dressed up in genuine leather, supported by elegant smoked walnut wood legs featuring aged brushed details. The mid-century modern Lauren Bar Stool is the perfect choice for a kitchen space or bar decor because it's versatile yet glamorous.

MATERIALS & FINISHES

Fabric: Genuine Leather
Legs: Smoked Walnut Wood
Details: Aged Brushed Brass

DIMENSIONS

W 44 cm | 17.3"
D 48 cm | 18.9"
H 77 cm | 30.3"



Dorothy Armchair



Materials & Finishes

Fabric: Satin Look
Legs: Smoked Walnut Wood
and Brushed Brass

DIMENSIONS

W 160 cm | 63"
D 82 cm | 32.3"
H 80 cm | 31.5"
SH 42 cm | 16.5"

COLLECTION

Sofa +



Dorothy Sofa



MATERIALS & FINISHES
Fabric: Satin Look
Legs: Smoked Walnut Wood
and Brushed Brass

DIMENSIONS
W 270 cm | 106.3"
D 82 cm | 32.3"
H 80 cm | 31.5"
SH 42 cm | 16.5"

COLLECTION
Armchair +

*The Swanson Sofa
emanates an aura
of lavish allure,
with its captivating
interplay of bold,
opulent contours.*

Swanson Sofa



Swanson Sofa



MATERIALS & FINISHES
Fabric: Velvet
Legs: Smoked Walnut Wood

DIMENSIONS
W 234 cm | 92.1"
D 92 cm | 36.2"
H 80 cm | 31.5"
SH 43.5 cm | 17.1"



Never Go Out of Style

The allure of seating that never goes out of style lies in its ability to seamlessly blend with any decor, effortlessly adapting to evolving tastes and preferences.

Our design pieces can be customized and are available in different finishes



Audrey Stool

Audrey Hepburn was considered the female legend of the cinema, also being a fashion supermodel and humanitarian. With a candid and sophisticated yet notorious beauty, she inspired our designers to create an extremely delicate and elegant mid-century furniture piece, the Audrey Luxurious Bench. The memorable and intricate polished brass structure of the feet holding this exquisite velvet upholstery unites strength and reflects Audrey's characteristic traits. This piece will turn any space into a luxurious and modern home décor.

MATERIALS & FINISHES

Fabric: Cotton Velvet

Details: Golden Piping

DIMENSIONS

Stool

DIA 45 cm | 17.7"

H 40 cm | 15.7"

Bench

DIA 120 cm | 47.2"

H 45 cm | 17.7"



Julie Stool

Julie Andrews, an enchanting icon of the stage and screen, has captivated audiences worldwide with her incomparable talent, grace, and versatility. Renowned for her crystalline voice, Julie effortlessly transitions between acting, singing, and dancing, leaving an indelible mark on the realms of theater and cinema.

Inspired by Julie's timeless grace and talent, this mid-century modern stool embodies the essence of her iconic presence, upholstered in a birdseye textile featuring a swivel base. Like the versatility of Julie Andrews' performances, the Julie stool adapts effortlessly to various settings and purposes.

MATERIALS & FINISHES

Fabric: Birdseye

Legs: Polished Brass Base

DIMENSIONS

W 66 cm | 26"

D 66 cm | 26"

H 66 cm | 26"

SH 42 cm | 16.5"



Betty Stool



MATERIALS & FINISHES

Fabric: Cotton velvet
Details: Golden piping, Gold Leaf

DIMENSIONS

DIA 35 cm | 13.8"
H 42 cm | 16.5"

Colette Stool



MATERIALS & FINISHES

Fabric: Cotton velvet
Details: Brushed Brass Ring

DIMENSIONS

DIA 42 cm | 16.5"
H 48 cm | 18.9"

Donna Stool

Known professionally as Donna Michelle, she was an American model and a Hollywood actress. Reinterpreting all the lushness lived during the Hollywood Golden Era, Ottiu designers conceived this modern mid-century stool.

As versatile as glamorous featuring elegant curved lines, the Donna stool can be an additional seat or can be used also as a classy footstool. Upholstered in velvet, supported by brushed brass feet, this timeless stool is a lovely way to declutter your home décor while adding style and also comfort.

MATERIALS & FINISHES

Fabric: Cotton Velvet
Details: Brushed Brass

DIMENSIONS

Version A
DIA 70 cm | 27.6"
H 45 cm | 17.7"

Version B
DIA 90 cm | 35.4"
H 45 cm | 17.7"

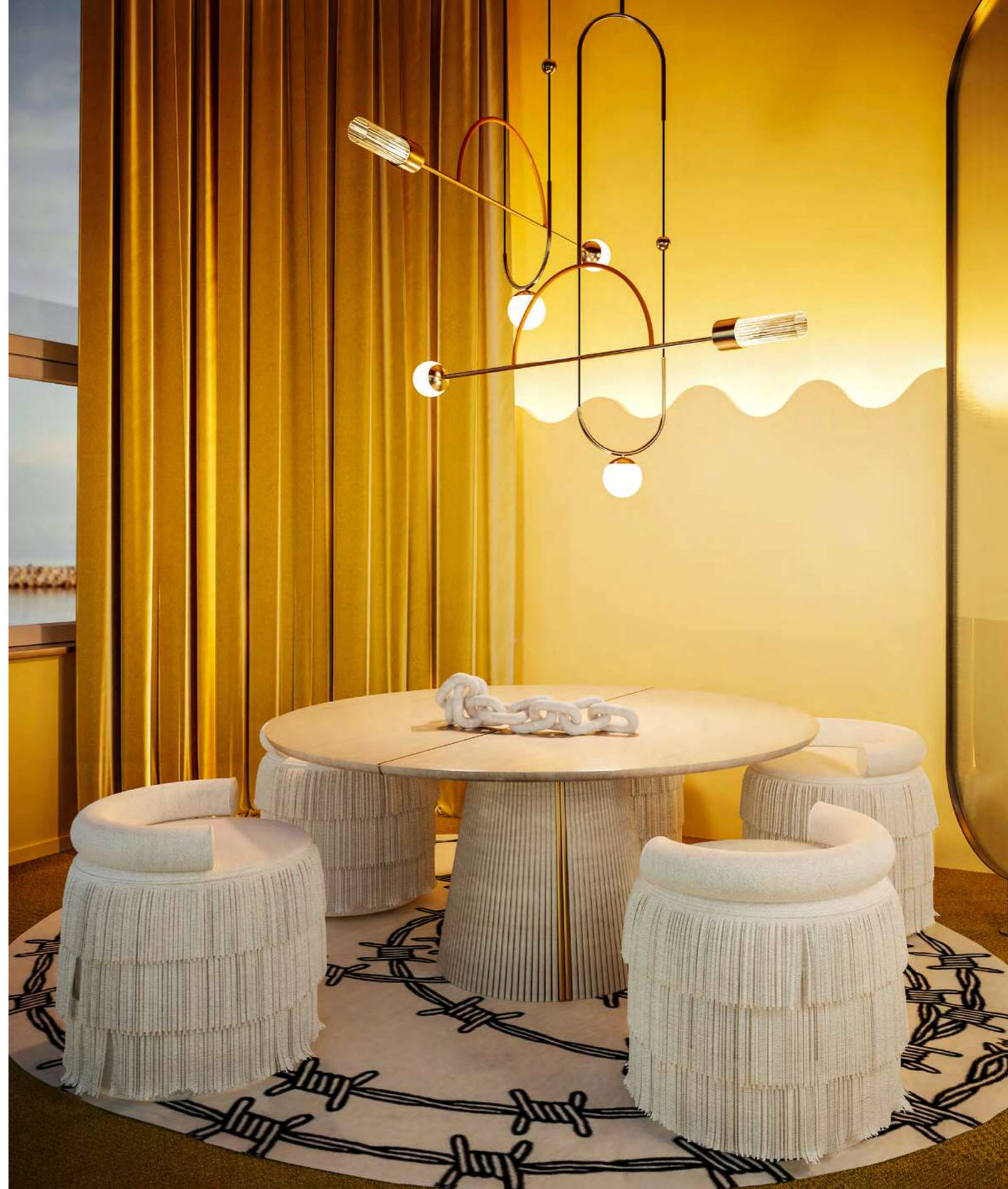


Beth Stool



MATERIALS & FINISHES
Fabric: Suede

DIMENSIONS
DIA 58 cm | 22.8"
H 58 cm | 22.8"
SH 50 cm | 19.7"





Charisse Stool

Cyd Charisse was an American actress and dancer known for the “strength and grace of a ballerina and an extraordinary on-screen presence that allowed her to play the cold and aloof femme fatale and the romantic ballerina with equal aplomb”. Such a powerful woman inspired Ottiu to create this elegant yet imposing piece: the Charisse Mid-Century Modern Stool. Dressing up the Charisse stool with multiple shades and textures in the same color family will keep your space interesting and spice up by sticking to a single color. This eye-catch stool will add style and grace to any personal space, like your bedroom, and impress in a luxurious living room.

MATERIALS & FINISHES

Fabric: Satin Look

Legs: Polished Brass Base

Details: Piping

DIMENSIONS

Charisse Stool S
DIA 40 cm | 15.7"
H 42 cm | 16.5"

Charisse Stool M
DIA 66 cm | 26"
H 39 cm | 15.4"

Charisse Stool L
DIA 90 cm | 35.4"
H 36 cm | 14.2"

COLLECTION

Dining Chair +

Armchair +

Charisse Dining Chair



MATERIALS & FINISHES

Fabric: Faux Leather
Legs: Upholstered Legs

DIMENSIONS

W 59 cm | 23.2"
D 60 cm | 23.6"
H 84 cm | 33.1"
SH 50 cm | 19.7"

COLLECTION

Armchair +
Stool +

Charisse Armchair



MATERIALS & FINISHES

Fabric: Cotton Velvet
Legs: Lacquered Base

DIMENSIONS

W 83 cm | 32.7"
D 83 cm | 32.7"
H 86 cm | 33.9"
SH 43 cm | 16.9"

COLLECTION

Dining Chair +
Stool +

Abbe Stool

Most known for her extravagant outfits for the time and a sultry style of performing, Abbe Lane was a famous American actress and singer. Because of Abbe's work in Europe, she was known first as an actress and after as recognized as a singer and dancer. She began her singing career on Broadway, portraying Bobo in "Oh Captain!".

Ottiu's designers translated her talent into the design, conceiving the mid-century modern Abbe Stool. Upholstered in velvet, this curved stool is as versatile as it is glamorous.

MATERIALS & FINISHES

Fabric: Cotton Velvet

DIMENSIONS

DIA 80 cm | 31.5"

H 45 cm | 17.7"



Mamie Bench



MATERIALS & FINISHES

Fabric: Cotton Velvet

Details: Brushed Brass

DIMENSIONS

W 55 cm | 21.7"

D 70 cm | 27.6"

H 45 cm | 17.7"



Sharon Bench

The expression "1960s style icon" brings many names to mind, such as Anita Pallenberg, Marianne Faithfull, Brigitte Bardot... a wide range of women who have popularized countless fashion trends. But another name appears occasionally associated with the decade: Sharon Tate. Tate improved to define the mood of a revolution decade and was an inspiration for designers, photographers, and filmmakers.

Inspired by the Hollywood Golden Era and her talent, Ottiu's designers conceived the Sharon bench. Regardless of modern mid-century style, outfitting a bed can transform a bedroom instantly. Dressed up in smooth cotton velvet degradé, supported by a polished brass base, the mid-century modern Sharon bench is suitable for hospitality yet residential projects.

MATERIALS & FINISHES

Fabric: Cotton Velvet
Details: Polished Brass

DIMENSIONS

W 120 cm | 47.2"
D 50 cm | 19.7"
H 45 cm | 17.7"

1. Almond pendant lamp by CREATIVEMARY®
2. Valerie bed
3. Sharon bench
4. Decatur bar car by PORUS®

Jayne Armchair



MATERIALS & FINISHES

Fabric: Cotton Velvet
Details: Brushed Brass

DIMENSIONS

W 94 cm | 37"
D 81 cm | 31.9"
H 90 cm | 35.4"
SH 42 cm | 16.5"

Peggy Armchair



MATERIALS & FINISHES

Fabric: Cotton Velvet
Details: Lacquered Feet

DIMENSIONS

W 115 cm | 45.3"
D 93 cm | 36.6"
H 78 cm | 30.7"
SH 45 cm | 17.7"

COLLECTION

Sofa +



Peggy Sofa



MATERIALS & FINISHES

Fabric: Bouclé

Details: Lacquered Feet

DIMENSIONS

W 245 cm | 96.5"

D 100 cm | 39.4"

H 85 cm | 33.5"

SH 46 cm | 18.1"

COLLECTION

Armchair +



*The Doris Armchair
exudes the glitz
and glamour of the
Golden Era.*

Doris Armchair

Doris Day, renowned as one of the luminaries of the silver screen during the illustrious 1950s, captivated audiences. It was amidst the media frenzy surrounding the film "Love Me or leave me," a cinematic masterpiece that epitomized the pinnacle of the Hollywood Golden Age, which Ottiu drew inspiration to create an armchair befitting the legacy of this remarkable muse.

The Doris armchair, a testament to the elegance of mid-century modern design, is a masterpiece meticulously crafted by skilled artisans. Doris invites you to indulge in the lavishness of your surroundings, offering multiple configurations possibilities to cater to the most discerning tastes.

MATERIALS & FINISHES

Fabric: Jacquard and Velvet

Structure: Walnut Wood

Details: Tricotine Fringes

DIMENSIONS

W 89 cm | 35"

D 66 cm | 26"

H 59 cm | 23.2"

SH 39 cm | 15.4"



Romy Sofa & Armchair

Romy Schneider was a highly acclaimed and versatile Austrian-born actress who achieved international recognition for her talent and beauty. Schneider's acting career began at an early age, and she soon rose to fame for her roles in both German and French cinema. Ottiu designers tribute Romy by conceiving this opulent line of upholstery seating.

MATERIALS & FINISHES

Fabric: Bouclé
Legs: Brass

DIMENSIONS

Sofa
W 357 cm | 140.6"
D 120 cm | 47.2"
H 89 cm | 35"
SH 42 cm | 16.5"

Armchair
W 141 cm | 55.5"
D 120 cm | 47.2"
H 89 cm | 35"
SH 42 cm | 16.5"



- 1. Almond suspension lamp by CREATIVEMARY®
- 2. Romy sofa
- 3. Monticello center table by PORUS®
- 4. Romy armchair

Eartha Armchair



MATERIALS & FINISHES

Fabric: Cotton Velvet
Details: Polished Brass

DIMENSIONS

DIA 110 cm | 43.3"
H 76 cm | 29.9"
SH 45 cm | 17.7"

COLLECTION

Day Bed +

Eartha Day Bed



MATERIALS & FINISHES

Fabric: Mix Jacquard Velvet
Details: Polished Brass

DIMENSIONS

DIA 208 cm | 81.9"
H 76 cm | 29.9"
SH 45 cm | 17.7"

COLLECTION

Armchair +

Simone Modular Sofa & Armchair

The exquisite Simone sofa is a modular piece that seamlessly blends style and functionality. With its versatile design upholstered in smooth velvet, the Simone modular sofa offers endless possibilities for creating personalized seating arrangements tailored to individual needs and preferences, making it ideal for entertaining guests or a smaller one for a more intimate setting.

MATERIALS & FINISHES

Fabric: Velvet

DIMENSIONS

Armchair
W 156 cm | 61.4"
D 104 cm | 40.9"
H 88 cm | 34.6"
SH 42 cm | 16.5"

Armless Chair
W 80 cm | 31.5"
D 104 cm | 40.9"
H 88 cm | 34.6"
SH 42 cm | 16.5"

Ottoman
W 80 cm | 31.5"
D 91 cm | 35.8"
H 42 cm | 16.5"
SH 42 cm | 16.5"

- 1. Cactus wall lamp by CREATIVEMARY®
- 2. Simone sofa
- 3. Simone armchair
- 4. Canopy center table by MALABAR®



*Radiating deluxe
magnificence,
the Nancy is
the curvaceous
masterpiece your
space yearns for.*

Nancy Chaise Longue



Nancy Chaise Longue & Sofa

Nancy Wilson was an American singer whose career spanned over five decades. Although she did not consider herself a jazz vocalist, though many others did, including the Grammy awards judges. Nancy always defined herself as a "song stylist". Inspired by the vocalist who brought a jazz sensibility to all kinds of songs and for the curvy throwback design trend, the Ottiu designers conceived this collection.

MATERIALS & FINISHES

Fabric: Cotton Velvet

Details: Upholstered Base

DIMENSIONS

Chaise Longue

W 184 cm | 72.4"

D 105 cm | 41.3"

H 80 cm | 31.5"

SH 45 cm | 17.7"

Sofa

W 296 cm | 116.5"

D 105 cm | 41.3"

H 80 cm | 31.5"

SH 45 cm | 17.7"



Elke Bench

Blonde and Beautiful, the Berlin-born Elke Sommer was one of the Hollywood's most captivating imports of the 60s. With her trademark, pouty lips and high cheekbones proved irresistible to the American audience.

Reinterpreting the mid-century lifestyle based on her irresistible beauty and charm, Ottiu designers conceived the mid-century modern Elke Bench.

MATERIALS & FINISHES

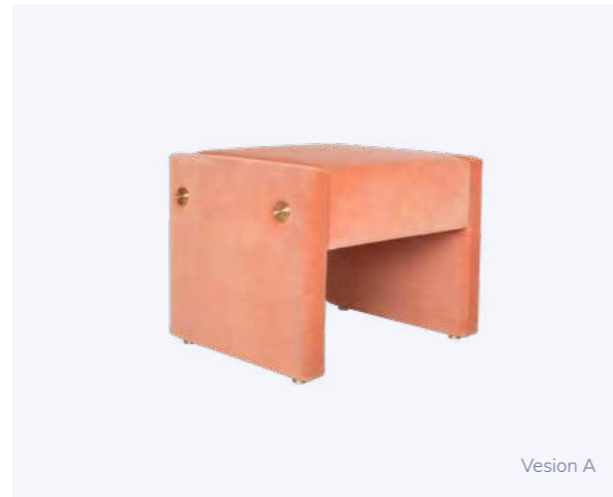
Fabric: Cotton velvet
Details: Brushed Brass

DIMENSIONS

Version A
W 60 cm | 23.6"
D 50 cm | 19.7"
H 43 cm | 16.9"

Version B
W 160 cm | 63"
D 50 cm | 19.7"
H 43 cm | 16.9"

Version C
W 180 cm | 70.9"
D 50 cm | 19.7"
H 43 cm | 16.9"



Dream a Little Dream of Ottiu

Indulge in the epitome of elegance and sophistication with our exquisite collection of midcentury bed designs. Featuring deluxe aesthetics, each bed is drawn to evoke a sense of opulence and refinement.

Our design pieces can be customized and are available in different finishes





Lisi Bed

Vina Lisi started her film career in her early teens in Rome. Though Lisi turned down "From Russia with Love", the Hollywood producers were scouting a new Marilyn Monroe, so Lisi debuted in Hollywood comedy movies. Inspired by the Hollywood Golden Era vibes, Ottiu designers conceived the mid-century modern Lisi bed.

MATERIALS & FINISHES

Fabric: Velvet

Details: Gold Studs

DIMENSIONS

Overall

W 215 cm | 84.6"

D 205 cm | 80.7"

H 140 cm | 55.1"

Headboard

W 202 cm | 79.5"

D 22.5 cm | 8.9"

H 140 cm | 55.1"

Bed Frame

W 210 cm | 81.5"

D 207 cm | 76.8"

H 30 cm | 11.8"

1. Miami suspension lamp by CREATIVEMARY®

2. Mon Ooh bedside table by MALABAR®

3. Lisi bed



*Make your room
the one you always
dream about.*

Valerie Bed



MATERIALS & FINISHES

Fabric: Velvet

DIMENSIONS

Overall

W 240 cm | 94.5"

D 235 cm | 92.5"

H 155 cm | 61"



Tammi Bed

Best known as one of the leading stars for Motown Records during the 60s, Tammi Terrell was an American singer-songwriter. Notably remembered for a series of duets with singer Marvin Gaye, Tammi's voice defined the passion and the soul. Ottiu designers tribute Tammi by conceiving this opulent bed. Conceived for those who have a cinematic eye for design, the Tammi Bed will elevate your dreamy place.

MATERIALS & FINISHES

Fabric: Velvet
Details: Polished Brass;

DIMENSIONS

Overall
W 240 cm | 94.5"
D 250 cm | 98.4"
H 140 cm | 55.1"



2.

1.

3.

4.

- 1. Hera suspension lamp by CREATIVEMARY®
- 2. Tammi bed
- 3. Boulder side table by PORUS®
- 4. Elke bench

Linda Bed

Known as one of the most beautiful muses of the Hollywood '60s, Linda Marshall was part of numerous successful movies and series. Her unquestionable talent and seductive beauty take her to the Hollywood Cinema World. Reinterpreting all the lushness lived during the Golden Era, Ottiu designers conceived the Linda Mid-Century Modern Bed.

MATERIALS & FINISHES

Fabric: Velvet

Legs: Lacquered Base

Details: Capitoné

DIMENSIONS

Overall

W 370 cm | 145.7"

D 214 cm | 84.3"

H 140 cm | 55.1"

Headboard

W 370 cm | 145.7"

D 15 cm | 6"

H 120 cm | 47.2"

Bed Frame

W 214 cm | 84.3"

D 207 cm | 81.4"

H 30 cm | 11.8"



new

Vitti Bed

Monica Vitti, a luminary of Italian cinema, has left an indelible mark on the film industry with her captivating performances and undeniable allure. Renowned for her enigmatic beauty, expressive eyes, and magnetic screen presence, Vitti's talent transcends language barriers, captivating audiences worldwide. Inspired by her captivating essence, the Vitti Bed embodies the enigmatic allure and timeless elegance that defined the legendary actress.

MATERIALS & FINISHES

Fabric: Matte Velvet

Details: Polished Copper plates

DIMENSIONS

Overall

W 220 cm | 94.5"

D 220 cm | 94.5"

H 141 cm | 55.5"

1. Melrose suspension lamp by CREATIVEMARY®

2. Vitti bed

3. Cactus table lamp by CREATIVEMARY®

4. Julie stool



Interior Design Projects

Ottiu proudly presents an exquisite repertoire of unrivaled interior design projects spanning hospitality areas and residential spaces. It is a privilege to play a role in these prestigious undertakings.



Ginger Fusion Cuisine



Designed to be a destination for food, drinks, and design, Ottiu designers present its newest hospitality project. Conceived into distinctive areas, where Art Déco, bold colors with subtle nature-inspired vibes come together to conceive a fresh hospitality design.

FEATURED PRODUCTS
Louis dining chair
Louis I dining chair
Anita dining chair
Kelly bar chair



Art Déco, bold colors with subtle nature-inspired vibes come together to conceive a fresh hospitality design.

Anita Dining Chair



University Club of Chicago

CHICAGO – USA



This exceptional club provides a space for the admiration of literature and the arts, fostering an atmosphere where guests and future members can embrace enduring values derived from a shared educational background.

FEATURED PRODUCTS
Louis bar chair

Sir Nikolai Hotel

HAMBURG – GERMANY



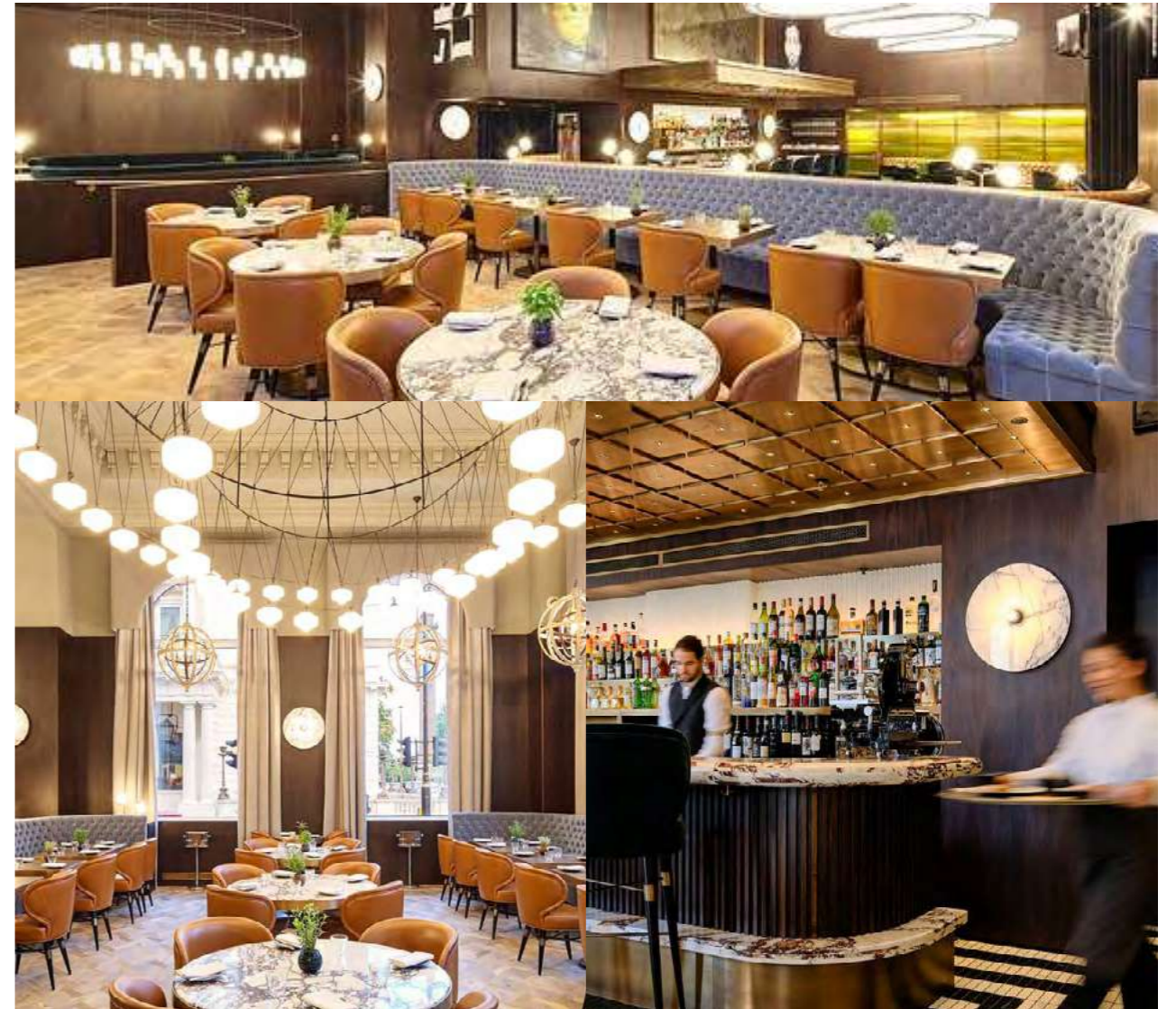
The Sir Nikolai Hotel, located in Hamburg, Germany has a huge and prestigious restaurant, the Izakaya. In perfect keeping with the innovative gastro, the concept is the extraordinary design by the Design Studio FG Stijl.

FEATURED PRODUCTS
Louis dining chair



St. James Restaurant

LONDON – UK



Set in the London Heart, St James offers the finest seasonal British produce and contemporary French cooking. A dining room décor that is being redesigned to reflect the new direction, featuring the modern mid-century dining and bar chairs, Louis.

FEATURED PRODUCTS
Louis bar chair
Louis dining chair

Carmè Restaurant

MILAN – ITALY



Carmè Restaurant's owners decided to honor their most important person in the world, their's mother, by giving her name to this glamorous place. The Italian restaurant offers the best of Mediterranean and Neapolitan Cuisine. Besides the Bistro area where you can enjoy a cocktail and quick meal, Carmè provides also a furnished outdoor area and a private bar room. There you can find our Tippi dining chair.

FEATURED PRODUCTS
Tippi dining chair



Brasserie Antoniete

MADRID – SPAIN



The Brasserie Antoinette is a restaurant that serves contemporary menus with a French touch. It strives to deliver quality products, at any time, to those who search for gala gastronomy and a place to spend a really good time.

FEATURED PRODUCTS

Visconti dining chair
Tippi dining chair
Louis dining chair

Petro Bar & Bistro

DALLAS – USA



Conceived by the Merriman Anderson Architects, the Cambria Dallas Downtown Petro Bar & Bistro does things differently. Located on the first floor of the historic Tower Petroleum Building, the restaurant blend the hotel's art deco aesthetic with a contemporary mindset.

FEATURED PRODUCTS

Louis bar chair

Zachary Hotel

CHICAGO – USA



FEATURED PRODUCTS

Visconti bar chair

Louis armchair

Visconti armchair



Inspired by the designs of the world-renowned Wrigley Field architect and Chicagoan Zachary Davis, the Hotel Zachary was designed. Combining a vibrant and modern aesthetic with classic elements, the Zachary is the most distinctive boutique hotel in Chicago.

St. Jane Hotel

CHICAGO – USA



“Grand style so your stay feels out of the ordinary. Small touches so it feels like home. “ A stay at St. Jane combines a personalized approach and high-touch attention to detail befitting their landmark building. The St. Jane Bar provides comfort and fashion bar chairs designed by our team, Louis Bar Chair.

FEATURED PRODUCTS
Louis bar chair

Racines Restaurant

SINGAPORE



FEATURED PRODUCTS
Louis dining chair

Cortazar Donostia

SAN SEBASTIÁN – SPAIN



FEATURED PRODUCTS
Kim bar chair



El Prado Hotel
CALIFORNIA – USA

FEATURED PRODUCTS
Louis bar chair

Hotel Kansas City Hyatt

MISSOURI – USA



FEATURED PRODUCTS
Louis bar chair

Atlantis The Royal

DUBAI



FEATURED PRODUCTS
Charisse stool

Cosmopolitan Hotel

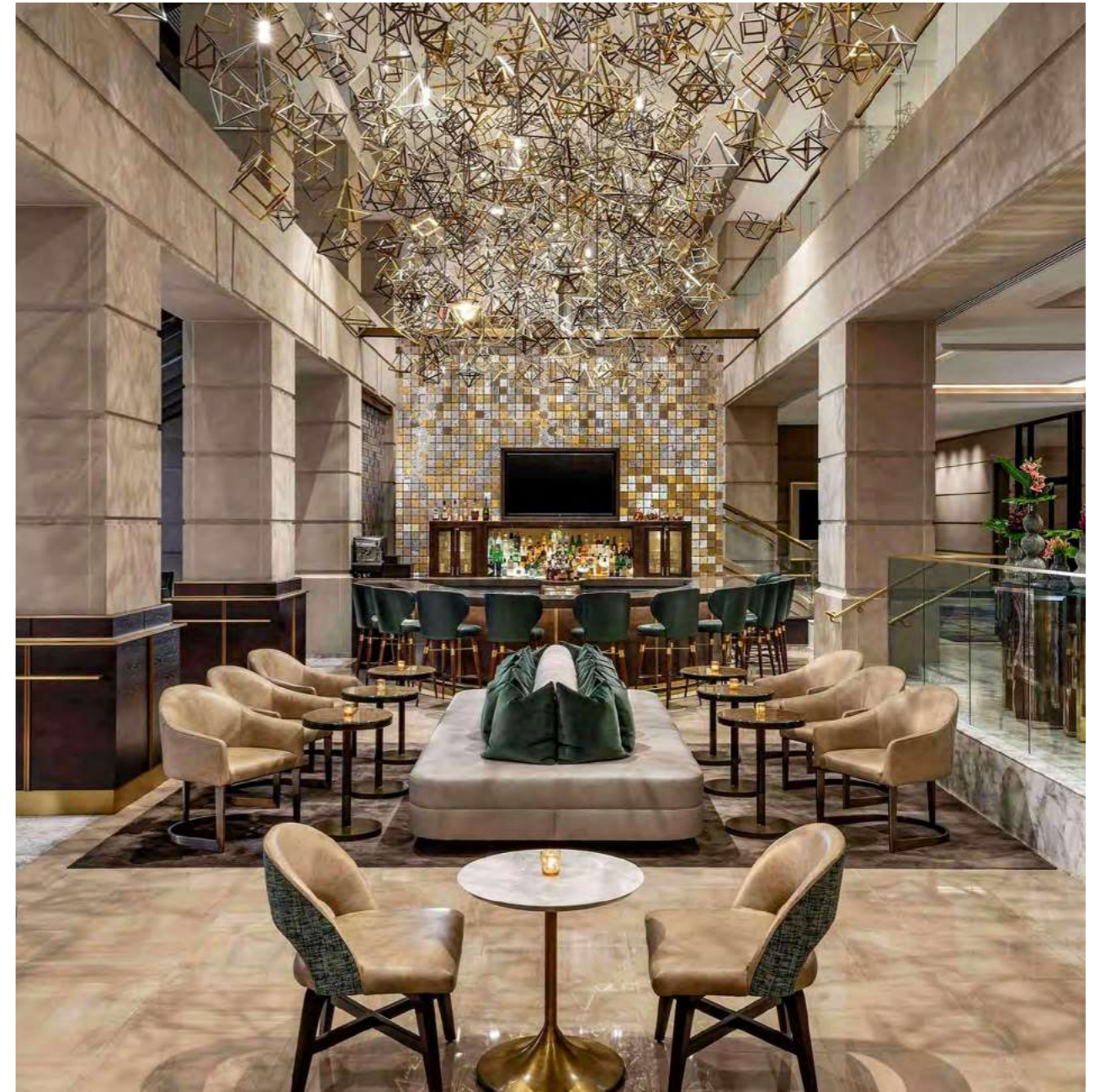
LAS VEGAS - USA



FEATURED PRODUCTS
Louis bar chair

The Fairmont Hotel

WASHINGTON - USA



FEATURED PRODUCTS
Louis bar chair



JW Marriott Hotel

MIRAFLORES – LIMA



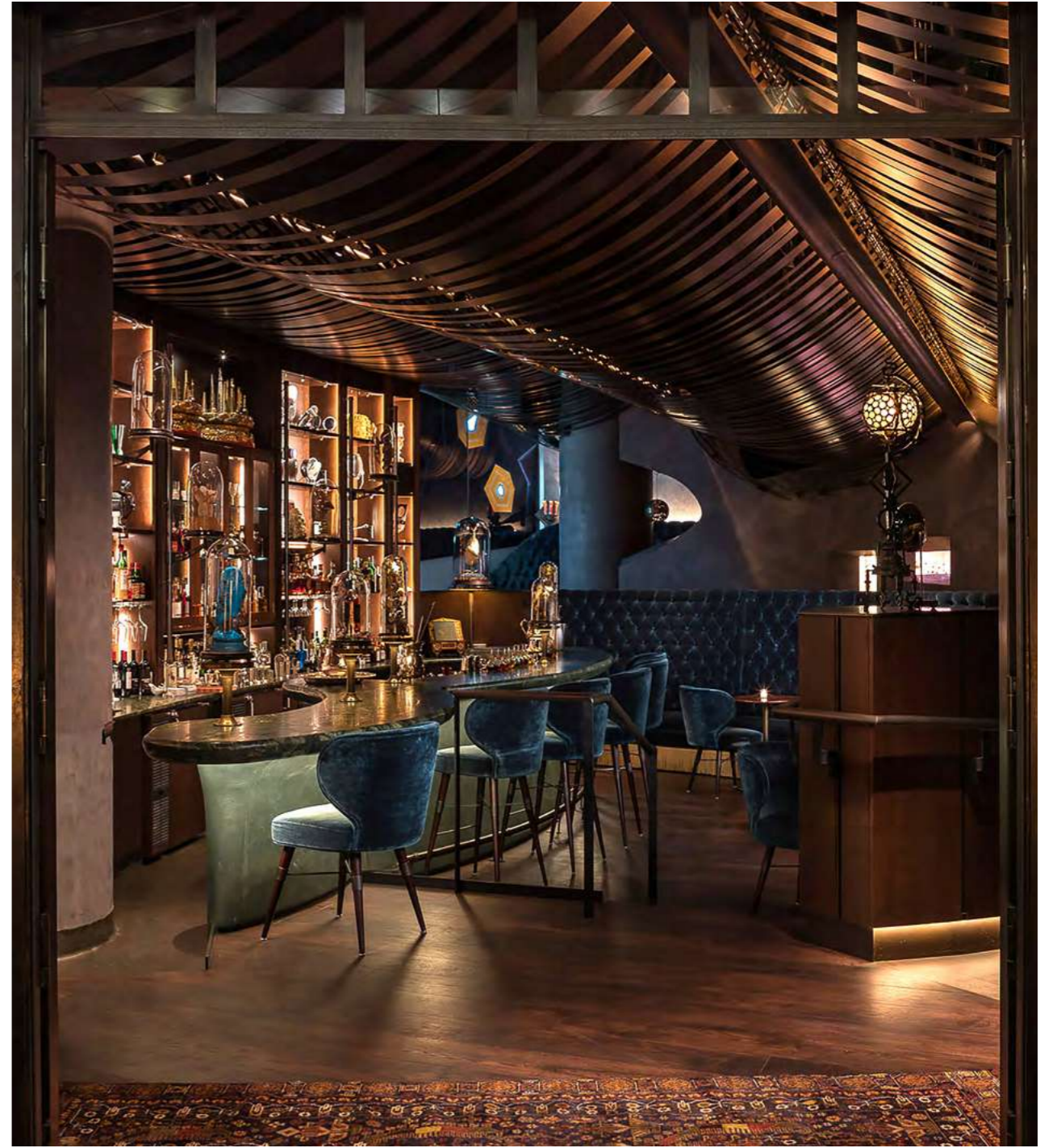
JW Marriott Hotel is a globally recognized luxury hotel brand, renowned for its impeccable hospitality, world-class amenities, and breathtaking architectural designs.

FEATURED PRODUCTS
Louis bar chair
Tippi dining chair



Four Seasons Hotel
AUSTIN, TEXAS – USA

FEATURED PRODUCTS
Tippi dining chair



Deep Dive Restaurant
SEATTLE – USA

FEATURED PRODUCTS
Louis bar chair
Louis dining chair



*The Deep Dive
was defined as the
“Most Beautifully
Designed Bar”
and won the Eater
Awards 2018
Design.*

Mélie

MADRID – SPAIN



FEATURED PRODUCTS
Visconti armchair

Bibo Restaurant

MADRID – SPAIN



FEATURED PRODUCTS
Tippi bar chair



This beautiful restaurant reflects the traveled essence of the BiBo cuisine with a giant hot-air balloon hanging over the bar, with the concept of a refined, cosmopolitan and elegant Andalusia.

Decorated by the interior designer Lázaro Rosa-Violán with a precious instinct for art, the BiBo features one of Ottiu's highlighted pieces, Tippi Bar Chairs.

Sunreef 80 Yachts

International Yacht & Aviation Awards Winner



FEATURED PRODUCTS
Anita dining chair

Residential Private Project

GENT – BELGIUM



FEATURED PRODUCTS
Louis armchair

Residential Private Project

NEW DELHI – INDIA



This New Delhi Duplex is conceived by Iram Sultan, whose artfully applied design vocabulary achieved that rare balance between the almost theatrical and the quietly sophisticated. This duplex overturns notions of the private and the public.

FEATURED PRODUCTS
Tippi dining chair

Residential Private Project

MOSCOW – RUSSIA



Kurilov Design stands for unique interiors that combine a warm atmosphere with contemporary deluxe décor. So surprising materials, neutral colors with brass details, featuring the right composition form the basis of this Residential Project in Moscow, Russia.

FEATURED PRODUCTS
Louis dining chair

Otium is the time when you forget about the world outside and get into your own. Enjoying life's pleasures and what makes you feel balanced and relaxed.